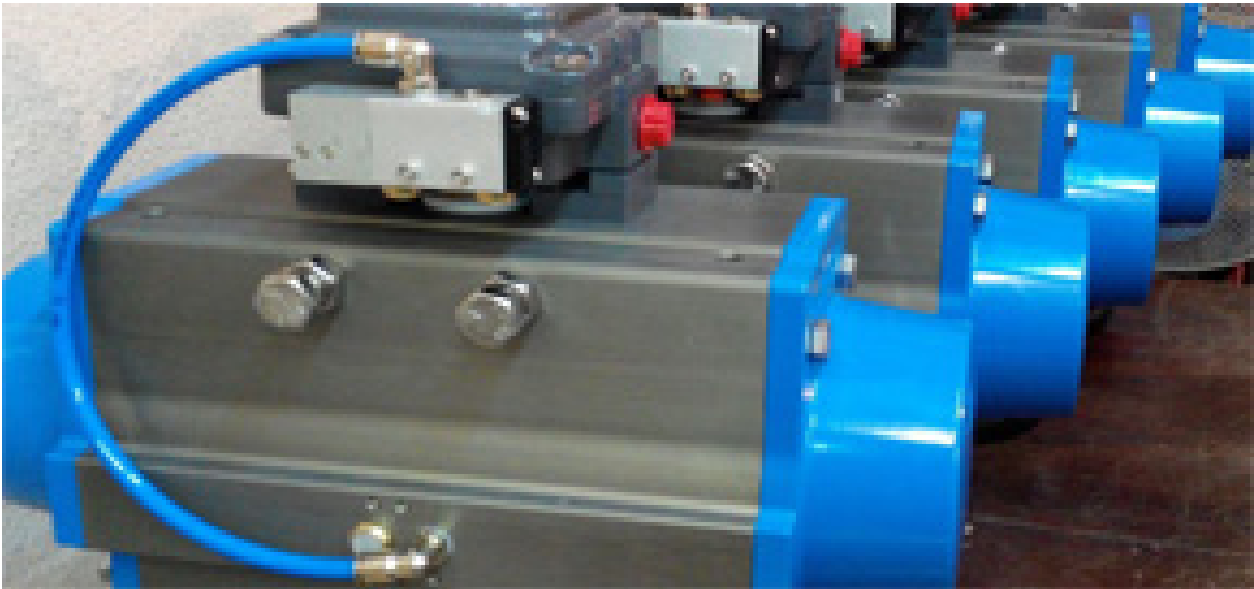


Catalog

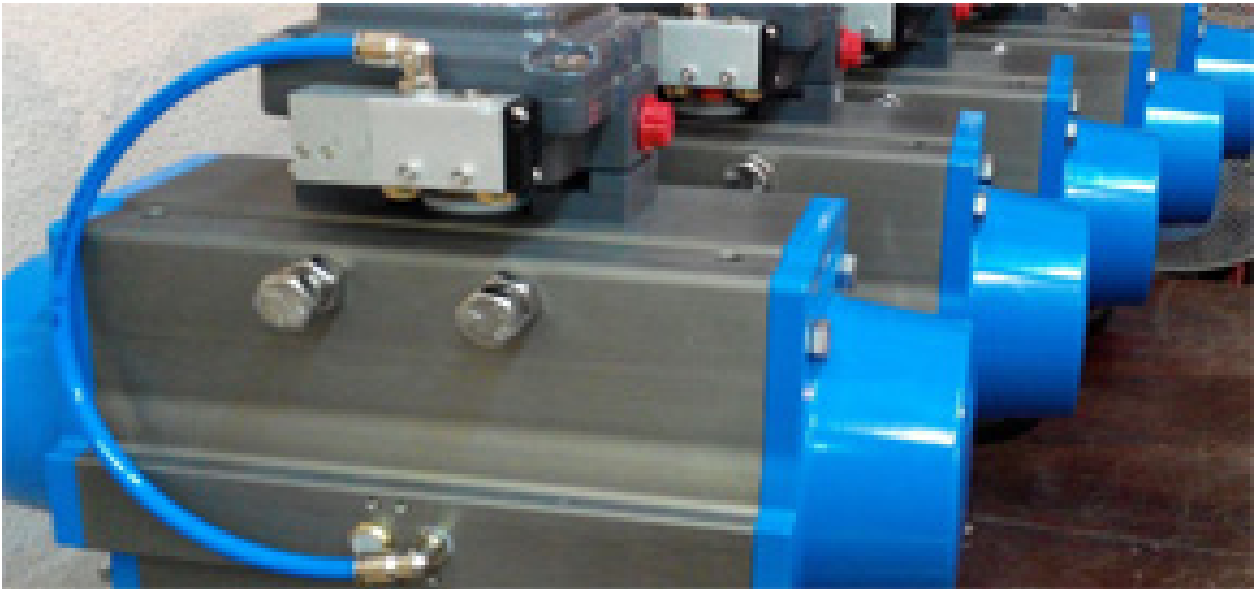


Архангельск (8182)63-90-72
Астана (7172)727-132
Астрахань (8512)99-46-04
Барнаул (3852)73-04-60
Белгород (4722)40-23-64
Брянск (4832)59-03-52
Владивосток (423)249-28-31
Волгоград (844)278-03-48
Вологда (8172)26-41-59
Воронеж (473)204-51-73
Екатеринбург (343)384-55-89
Иваново (4932)77-34-06
Ижевск (3412)26-03-58
Иркутск (395)279-98-46
Казань (843)206-01-48
Калининград (4012)72-03-81
Калуга (4842)92-23-67
Кемерово (3842)65-04-62
Киров (8332)68-02-04
Краснодар (861)203-40-90
Красноярск (391)204-63-61
Курск (4712)77-13-04
Липецк (4742)52-20-81
Магнитогорск (3519)55-03-13
Москва (495)268-04-70
Мурманск (8152)59-64-93
Набережные Челны (8552)20-53-41
Нижний Новгород (831)429-08-12
Новокузнецк (3843)20-46-81
Новосибирск (383)227-86-73
Омск (3812)21-46-40
Орел (4862)44-53-42
Оренбург (3532)37-68-04
Пенза (8412)22-31-16
Пермь (342)205-81-47
Ростов-на-Дону (863)308-18-15
Рязань (4912)46-61-64
Самара (846)206-03-16
Санкт-Петербург (812)309-46-40
Саратов (845)249-38-78
Севастополь (8692)22-31-93
Симферополь (3652)67-13-56
Смоленск (4812)29-41-54
Сочи (862)225-72-31
Ставрополь (8652)20-65-13
Сургут (3462)77-98-35
Тверь (4822)63-31-35
Томск (3822)98-41-53
Тула (4872)74-02-29
Тюмень (3452)66-21-18
Ульяновск (8422)24-23-59
Уфа (347)229-48-12
Хабаровск (4212)92-98-04
Челябинск (351)202-03-61
Череповец (8202)49-02-64
Ярославль (4852)69-52-93

Киргизия (996)312-96-26-47 Казахстан (772)734-952-31 Таджикистан (992)427-82-92-69

www.achem.nt-rt.ru || afc@nt-rt.ru

Standard Pneumatic Actuators





A 系列 不锈钢 气动 执行器

A Series Stainless Steel Pneumatic Actuators

ALPHA-ACHEM A & AA Series pneumatic actuators are 100% stainless steel actuators with the strong point of the fourth generation rack & pinion pneumatic actuators. Based on latest CNC machining centers & mechanical manufacturing technology, and nearly 20 years know-how of the rack & pinion technology, this actuators we manufactured is a high grade product with the characteristics of reliability, high performance, long cycle life and already proved to be used in most corrosive chemicals as well as very harsh industrial atmospheres.

1. Wide scope of output torque / 品种规格多输出扭矩范围广

Totally, we have 10 different size (specifications) actuators for choice. The output torque range is from 15Nm to 3815Nm at 5 Bar. The AA-300 stainless steel actuator with 3815Nm is biggest one in the World now.



2. Excellent corrosion resistance / 独特的抗腐蚀性能

All main parts of A & AA series actuator and it's accessories are made from stainless steel. The body and end-caps is made by investment casting stainless steel. The CF8 (304) and CF8M (316) are available for choice. The pinion and fastening are made by 304 or 316 on requiring. Nearly 20 years experience of application proved that this kind of stainless steel pneumatic is able to offer excellent resistance to most corrosive chemicals (such as acid, alkali) as well as corrosive industry atmospheres, such as offshore, oil and gas platform, pharmaceutical and food industry.



3. Precision machining of tooth surface with smooth operation and long life

精加工齿面确保运行平稳工作寿命长

High level manufacturing technology for the rack & pinion in our workshop allows this actuator not only to cycle more than 1 million times free from failure but also to offer exceptionally smooth actuation due to the low friction generated during rotational operations.



4. Flexible adjustment in travel ends / 方便灵活的行程两端双位调节

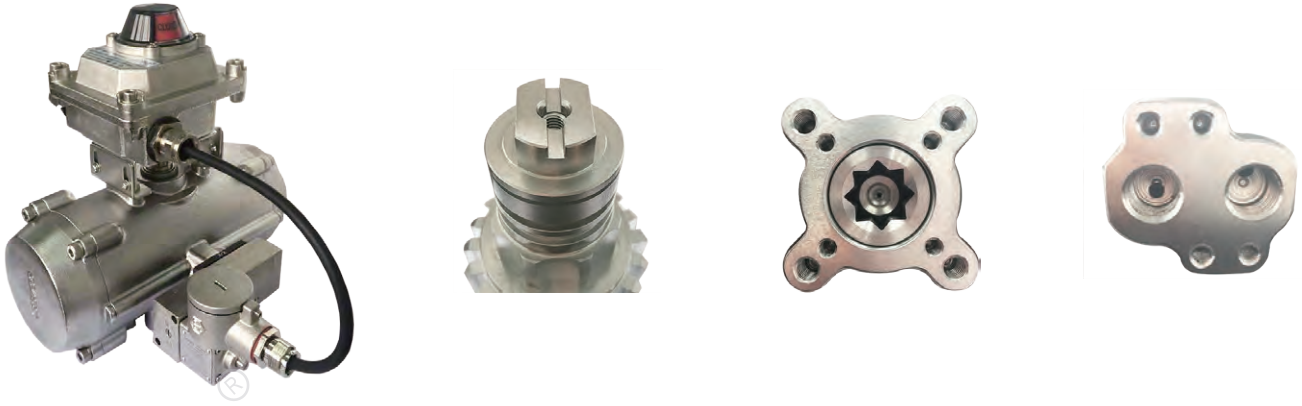
The two independent external travel stop bolts allow $\pm 5^\circ$ adjustment at 0° and 90° of the quarter travel. This adjustments are only available for AA series.

A Series Stainless Steel Pneumatic Actuators



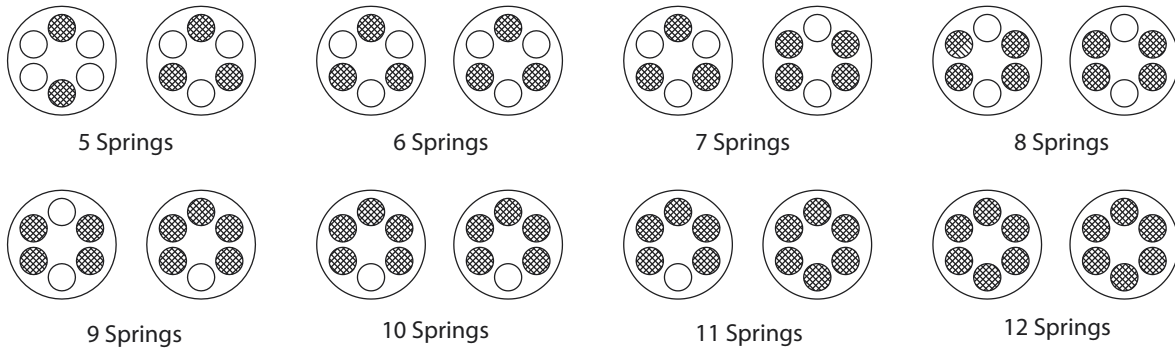
5. Namur and ISO5211 Mount / 采用国际通用的ISO5211和Namur安装标准

A & AA series Stainless Steel Pneumatic Actuators are designed to incorporate Namur mounting for solenoids, limit switches and positioners and offer a ISO5211 combination mounting pads that allow you to mount directly to quarter turn valves.



6. Single acting with high performance springs / 不锈钢弹药筒结构弹簧安装方便工作寿命长

Preloaded coating springs are made from the high quality material for resistant to corrosion and longer cycle life, which can be demounted safely and conveniently to satisfy different requirements of torque by changing quantity of springs.



Even spring set is recommended for high cycle application.

7. Classic A series stainless steel actuator is always available / 经典A型不锈钢执行器





B 系列气动执行器

B Series Pneumatic Actuators

Since 1998, the Chinese market has seen the production and sale of the rack & pinion pneumatic actuators. B series actuators were most popular in the market during the initial period. We are the first one to introduce this technology to China and begun to produce the A and B series pneumatic actuator in our factory. The successful sales and production in the last 30 years have proved that B series pneumatic actuator not only has the advantage of price, but also the quality and performance of the actuator can meet the demand of the market. Up to now, B series pneumatic actuator has successfully got the approvals of CE, SIL3 and ATEX. Here are the product features and working conditions.



1. Specification and Output Torque / 品种规格全输出扭矩范围广

Totally, we have 18 different size (specifications) actuators for choice. The output torque range is from 7Nm to 8140Nm at 5 bar for double acting. As for spring return, The output torque (fail closed) range is available to choice from 2.9Nm to 4199Nm.

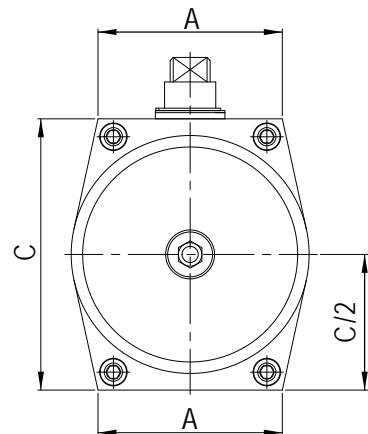


2. Symmetrical Shape Design / 对称设计重量轻成本低

Symmetry design of the B series pneumatic actuator is perfect. Because of the symmetrical design, the left and right end-caps of the B series actuator are interchangeable. More importantly, symmetrical design reduces the weight of the actuator, reduces the inventory of parts, and makes the actuator more competitive.



The left and right end-caps are interchangeable



Symmetrical Design of the body Shape

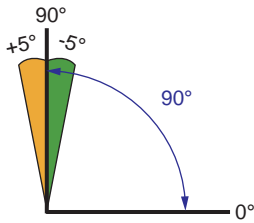
B 系列气动执行器

B Series Pneumatic Actuators

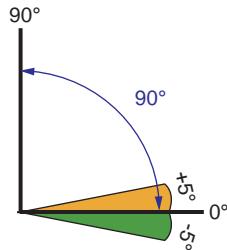


3. Rotary travel and it's adjusting / 灵活的单端限位调节

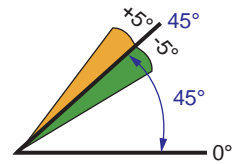
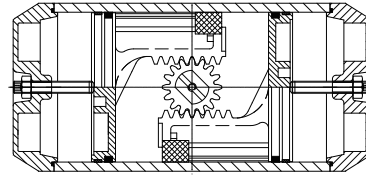
- 1) Rotary travel: $0^\circ \sim 90 \pm 5^\circ$ (Standard Assembly); Rotary travel: $0 \pm 5^\circ \sim 90^\circ$ (Reverse Assembly)
- 2) Small rotary travel: $0^\circ \sim 45^\circ$, $0^\circ \sim 55^\circ$ and $0^\circ \sim 75^\circ$ and so on (Standard Assembly).



$0^\circ \sim 90 \pm 5^\circ$



$0 \pm 5^\circ \sim 90^\circ$



Lengthened adjusting bolt to implement non-standard rotary travel.



4. Namur Interface / Namur面设计方便附件直接安装

- 1) Top Namur interface design ensures the convenient and standardized assembly installation for accessories, such as the limit switch box, position sensors and positioner.
- 2) Armed with Namur adaptor, B series actuators are available for pressure connection with NAMUR solenoid valve or inline solenoid valve directly.

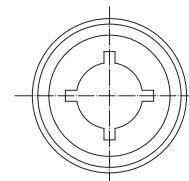
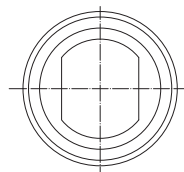
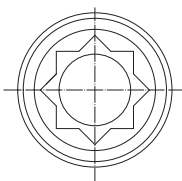
5. Valve Mounting / ISO5211法兰尺寸设计方便阀门直接安装

The valve mounting dimensions on D series actuator fully comply with the international standard of ISO5211:2001(E).

The British system mounting pattern is available for choice.

6. Driving mode / 多样化的驱动形式

This actuator is able to offer double square, double D or keyed (FK) female driving mode for a number of different new or existing valve stem configurations.





C 系列气动执行器

C Series Pneumatic Actuators

As early as 2003, we started manufacturing AICHEM C series pneumatic actuators in partnership with Allied Flow Control Co. in USA. After 15 years of production and improvement, C series pneumatic actuator has become a high-quality classic product in ALPHA-AICHEM group. The actuator features a top mount multifunction indicator and open-close stops adjustment as a standard. In addition, the state-of-the-art engineering design has allowed us to reduce the size of the actuator without losing any torque. Up to now, C series pneumatic actuator has successfully got the approvals of CE, SIL3 and ATEX. Here are the product features and working conditions.



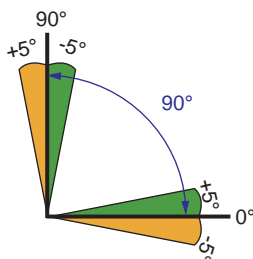
1. Specification and Output Torque

C series pneumatic actuator has 17 specifications and the model is C-40, C-52, C-63, C-75, C-83, C-92, C-270, C-300, C-350 and C-400 respectively. Double acting and spring return is available for the actuator. The double acting actuator's output torque range is from 11.9Nm to 8140Nm at 5 bar and the spring return actuator's output torque (fail to closed) range is from 4.3Nm to 4199Nm.

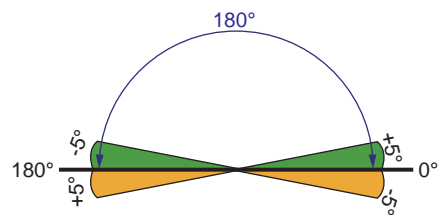
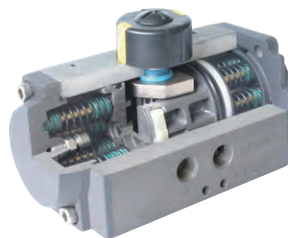


2. Travel Stroke and it's adjusting / 行程多样双限位调节方便

- 1) Standard stroke: $0^{\circ} \sim 90^{\circ}$ with $\pm 5^{\circ}$ adjustment at 0° (Closed) and 90° (Open) stops.
- 2) Large stroke: $0^{\circ} \sim 180^{\circ}$ with $\pm 5^{\circ}$ adjustment at 0° (Closed) and 180° (Open) stops. The open stop at $100^{\circ}, 120^{\circ}, 130^{\circ}, 140^{\circ}, 150^{\circ}, 160^{\circ}$ or 170° also is available for optional.



Standard stroke



Large stroke

C 系列气动执行器

C Series Pneumatic Actuators



3. Namur Interface / Namur面设计方便附件直接安装

- 1) Top Namur interface design ensures the convenient and standardized assembly installation for accessories, such as the limit switch box, position sensors and positioner.
- 2) Solenoid valve Namur interface design are available for pressure connection with NAMUR solenoid valve or inline solenoid valve directly.

4. Valve Mounting / ISO5211 法兰尺寸设计方便阀门直接安装

The valve mounting dimensions on D series actuator fully comply with the international standard of ISO5211:2001(E). The British system mounting pattern is available for choice.

5. Driving mode / 多样化的驱动连接形式

This actuator is able to offer double square, double D or keyed (FK) female driving mode for a number of different new or existing valve stem configurations.



6. Material, Coating and working atmosphere / 多样化的表面涂层适用于独特的工作环境

The body and the end-cap of the actuator are made of extruded aluminum and die-casting aluminum respectively. Hard anodized coated for the body and anodized + polyester coated for the end-cap are standard coating for D series actuator. The nickel phosphorus or PTFE coated are optional for use in a harsh environment.



Hard anodized body
polyester coated end-caps



polyester coated body
polyester coated end-caps



Nickel phosphorus coated



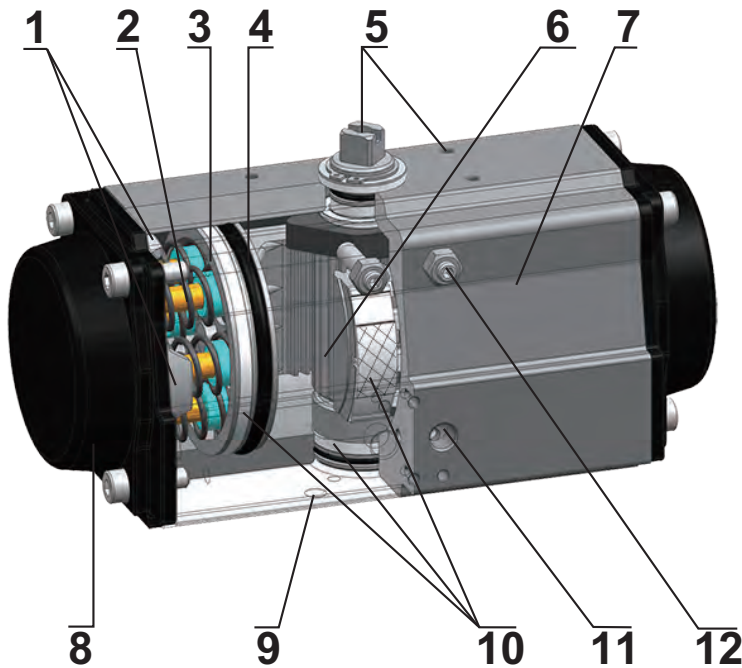
PTFE Coated



D 系列气动执行器

D Series Pneumatic Actuators

ACHEM D series pneumatic actuator is one of the main series in the actuator's family of ALPHA-ACHEM group. Based on advanced air flow control technology, high-precision machinery equipments, high quality materials and our awe and veneration toward the products, D series actuator has achieved high scores from our customers. So far, D actuator has been in the global market around 13 years since 2005 and more than one million actuators of various specifications were worked and operated safely on all kinds of quarter-turn valves worldwide. Up to now, AICHEM D series pneumatic actuator has successfully got the approvals of CE, SIL3 and ATEX. The D series actuators remain the world's leading because of the following features.



1. Safety limiter / 安全限位器

The safety limiter of the D series actuator is achieved by four lips on the end cap which can ensure that meshing motion of piston and pinion is always in a safe state.

2. Cartridge springs / 弹药筒结构弹簧

Preloaded and cartridge structure springs are made from piano spring material to ensure long term trouble-free operation. It can be demounted safely and conveniently to drive a variety of valves by changing quantity of springs.

3. Pistons / 压铸铝活塞

The twin rack pistons are made from die-casting aluminum coated with anodized. Symmetric mounting design ensures trouble-free fast operation in long life and has it very simple for reversing rotation by inverting the pistons in field.

6. Pinion / 齿轮轴

According to the latest standards of ISO5211, DIN3337, NAMUR, the pinion is designed and made of extruded low carbon alloy steel with nickel phosphorus coated for long-term operation even in a harsh environment.

7. Actuator body / 挤压铝缸体

Based on the latest standards of ISO5211, the body is designed and made of extruded aluminum ASTM6005. The hard anodized coated is standard for body surface and the polyester, nickel phosphorus or PTFE coated are optional in any colour.

4. O-rings and seals / 密封组件

NBR rubber o-rings provide excellent sealing effect for long-term trouble-free operation within standard temperature ranges. For high (150°C) or low temperature (-40°C), viton or LNBR rubber is used.

5. Top mounting / 顶部安装面

Namur (VDI/VDE 3845) design of position indicator and connection dimensions ensures the convenient and standardized assembly installation for accessories, such as the limit switch box, position sensors and valve positioner.



Namur Standardized Top Mounting

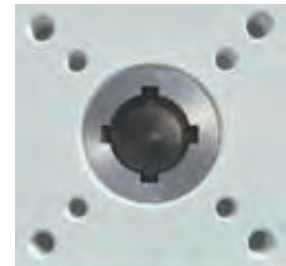
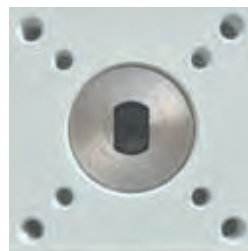


8. End caps / 端盖

The end-caps made from die-casting aluminum with anodized and polyester coated. The nickel phosphorus or PTFE coated are optional for use in a harsh environment. The coincidence design ensures end-caps and the body to be in perfect installation.

9. Valve mounting (Flange dimensions) / 底部阀门安装面

The flange dimensions on D series actuator fully comply with the international standard of ISO5211:2001(E). The British system mounting pattern is available for choice. This actuator is able to offer double square (FS), double D (FD) or keyed (FK) female drive form for a number of different new or existing valve stem configurations

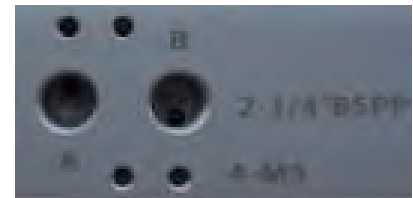


10. Bearings & guides / 导向板支撑圈

Which made from low friction, long-life compound material (POM and Nylon and 30% glass fiber) to avoid the direct contact between metals and ensure the long-term operation even in a harsh environment. The maintenance and replacement are easy and convenient.

11. Interface to solenoid valve / 电磁阀安装面

The design of this interface is fully comply with the international standard of Namur (VDI/VDE 3845) and BS EN15714-3:2009(E) which are available for pressure connection directly with NAMUR solenoid valve or inline solenoid valve.

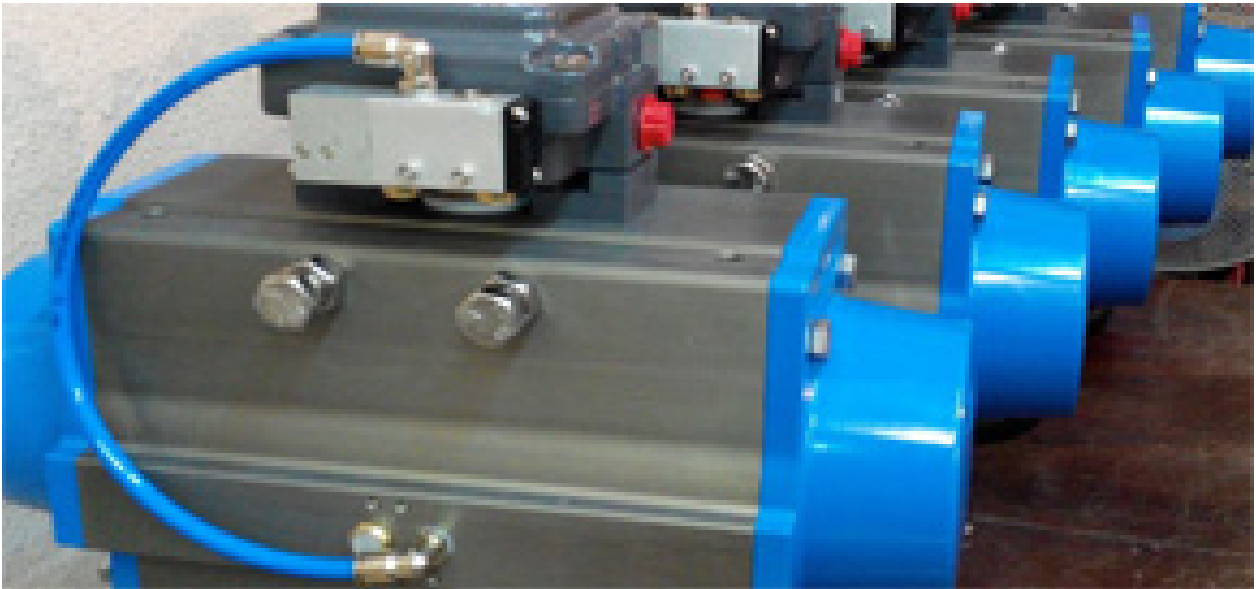


12. Travel stops / 可调式行程限位器

Equipped with double adjustable travel stops that allow the actuators to drive the valve to the fully open or fully closed position with a range of $\pm 5^\circ$.



Multifunctional Pneumatic Actuators



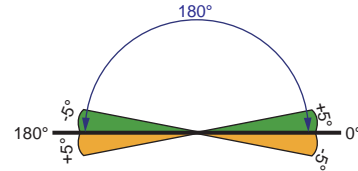
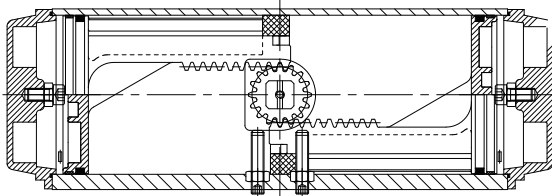


C 系列气动执行器

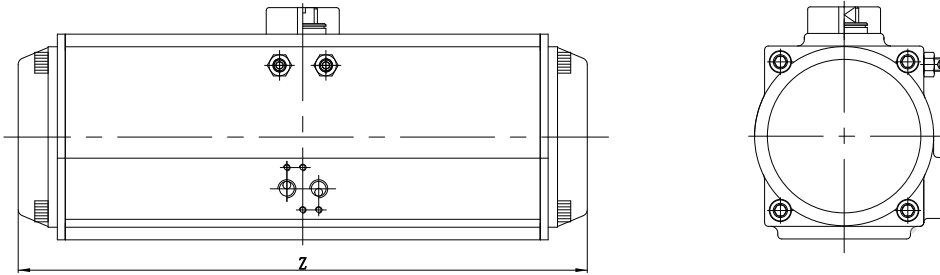
C Series Pneumatic Actuators

7. Large stroke actuator / 大行程气动执行器

7.1 An actuator with a rotation stroke of more than 120° is called a large stroke actuator. Based on our standard stroke (90°) actuator, as long as we are equipped with large stroke pistons and body and specially designed cam, the actuator will be able to perform the work of a large stroke. This stroke can be determined according to the needs of the customer, such as 120°, 130°, 180°, and so on.



7.2 The size of the large stroke actuator is the same as that of the standard actuator, except for the length which are shown in tabel below.



Unit:mm

Model	C52-180DA	C63-180DA	C75-180DA	C83-180DA	C92-180DA	C105-180DA	C125-180DA	C140-180DA	C160-180DA	C190-180DA	C210-180DA
Z	211	243	258	298	362	394	429	583	666	764	768

Note that the top of the large stroke actuator at C125 and above size is equipped with two mounting rings.

7.3 The output torque is the same as that of the standard actuator of 90°. Note that our C series large stroke actuator is only available for double acting now.

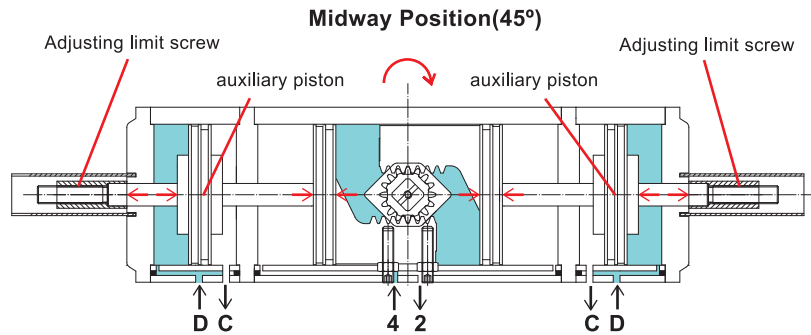


8. Three-position pneumatic actuator / 三位式气动执行器

8.1 The three-position actuator is mainly used for the process control of three-way or four way valve or other three-position rotating device. We can provide two types of three-position pneumatic actuators. one is 90° three-position actuator which can perform stroke operation in three positions within the range of 90°, such as 0°, midway and 90°, MD = (20°, 80°), and the other one is 180° three-position actuator which can perform stroke operation in three positions within the range of 180°, such as 0°, midway and 180°, MD = (90°, 170°).

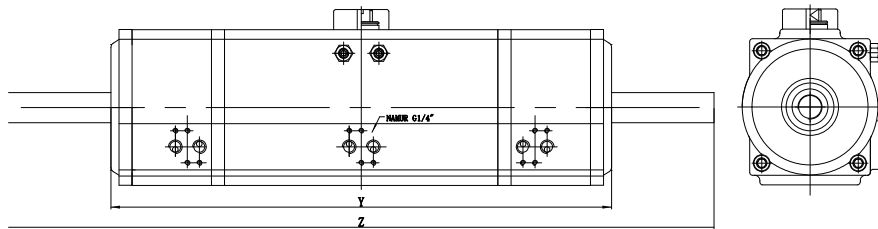
C 系列气动执行器

C Series Pneumatic Actuators



The midway position is achieved by a mechanical stops from 2 auxiliary pistons and adjusting limit screws. The figure above can be seen. Firstly, air to port D forces the auxiliary pistons inwards and then stop in the midway under the restriction of the adjusting limit screw. The screw is external and adjustable. Second, air to port 4 forces the main pistons outwards, causing the pinion to turn clockwise which will be stopped under the restriction of the auxiliary piston bar in midway.

8.2 Most of the dimensions of the three position actuator is the same as that of the standard actuator, except for the length which are shown in table below.



90° three-position actuator with double acting

Unit:mm

Model	C52T90DA	C63T90DA	C75T90DA	C83T90DA	C92T90DA	C105T90DA	C125T90DA	C140T90DA	C160T90DA	C190T90DA	C210T90DA
Y	261	303	306	336	394	409	456	550	648	788	788
Z	369	431	434	500	579	603	660	784	912	1102	1112

90° three-position actuator with spring return

Unit:mm

Model	C52T90SR	C63T90SR	C75T90SR	C83T90SR	C92T90SR	C105T90SR	C125T90SR	C140T90SR	C160T90SR	C190T90SR	C210T90SR
Y	261	313	330	361	432	455	498	630	728	878	879
Z	369	441	454	525	617	649	702	864	992	1202	1203

180° three-position actuator with double acting

Unit:mm

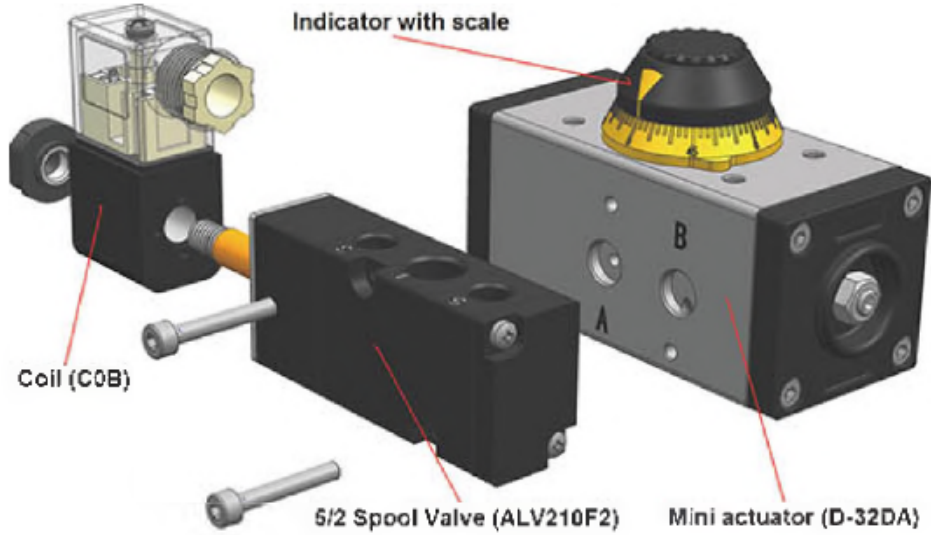
Model	C52T180DA	C63T180DA	C75T180DA	C83T180DA	C92T180DA	C105T180DA	C125T180DA	C140T180DA	C160T180DA	C190T180DA	C210T180DA
Y	333	387	389	441	506	541	599	747	866	1044	1044
Z	431	515	517	596	671	715	773	951	1100	1328	1328

8.3 The output torque is same as that of the standard actuator of 90°. Note that our C series 90° three-position actuator is available for double acting and spring return, but 180° three-position actuator only available for double acting.

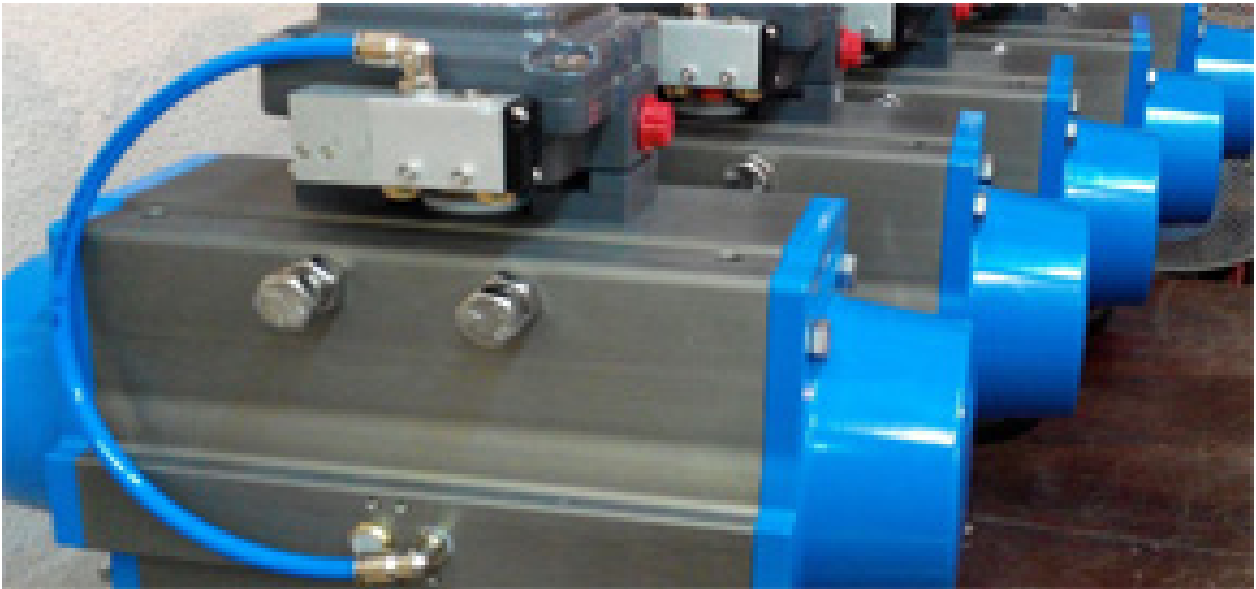


ACHEM Mini Pneumatic Actuator

With the air connection interface optimizing design of Wilson, now we have successfully realized the solution to install ACHEM Mini pneumatic actuator (D-32DA) with two -position five-way (5/2) spool valve together which is more direct and compact. The output torque of the small pneumatic actuator can reach 8 Nm at 5 Bar, which is especially suitable for compact installation of DN8 (1/4"), DN10 (3/8") and DN15 (1/2") ball valves with pneumatic actuators. It is widely used in some light industrial machinery with limited space.



Spring-Diaphragm Actuators





ASD系列弹簧薄膜执行器

ASD Series Spring-Diaphragm Actuators

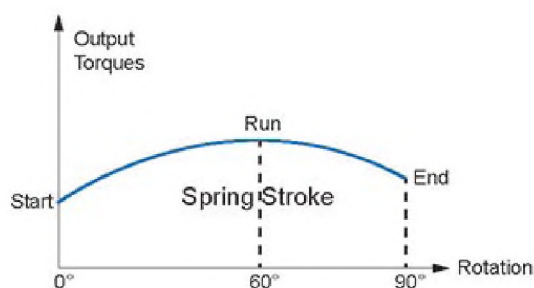
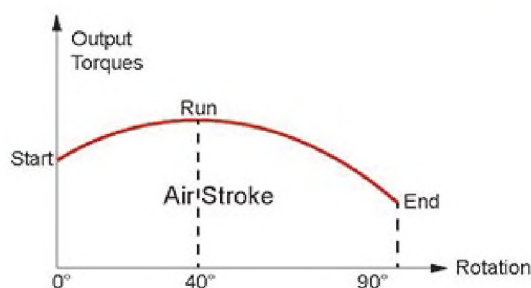


- Rotary travel: $0^{\circ}\sim 90^{\circ}$ with $\pm 5^{\circ}$ adjustment at closed and open stops.
角行程 $0^{\circ}\sim 90^{\circ}$ ，外置双限位调节器
- High control precision of operation because of spring diaphragm structure
弹簧薄膜结构运行平衡控制精度高
- Applicable to various working media, such as gas, water and hydraulic fluid
适用于多种工作介质，气、水和基于矿物的液压流体均可驱动工作
- Available to operate at low pressure (minimum pressure 1 Bar)
可以在低压情况下正常工作（最低压力1Bar）

Designed and developed specifically for quarter turn valves. The AICHEM ASD Spring-Diaphragm Rotary Actuators were designed by using advanced, spring-diaphragm technology that focuses on the crank-shaft and the connecting rod. The AICHEM ASD Spring-Diaphragm Rotary Actuators are designed to be used with minimal pressures when necessary and can be operated by air, gas, water, oil or other supply media. Our housing and cover are constructed with a ductile iron / carbon steel casing that is coated with a polyester powder coating. Our independent media room is equipped with a Buna-N diaphragm reinforced with polyamine fabric. These actuators are designed to work in temperatures as low as -40°C (-40 °F) and as high as 200C (392 °F).

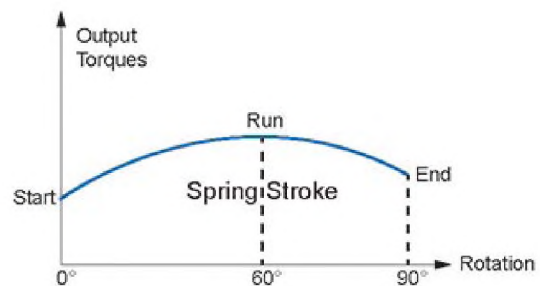
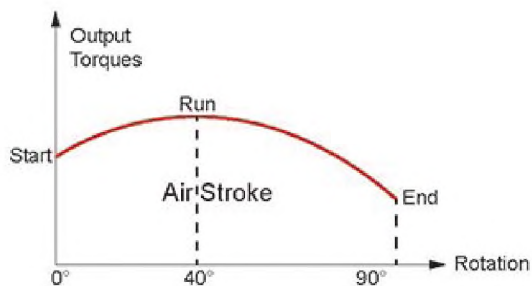
ASD Actuator Output Torques(Nm)

型号 Size	气源压力 Air Strock at Presure (BAR)															弹簧回复 Spring Strock		
	1			1.3			2			2.8			3.4			Start (90°)	Run (60°)	End (0°)
	Start (0°)	Run (40°)	End (90°)	Start (0°)	Run (40°)	End (90°)	Start (0°)	Run (40°)	End (90°)	Start (0°)	Run (40°)	End (90°)	Start (0°)	Run (40°)	End (90°)			
ASD2A	25	33	10	45	53	27	95	100	69							34	39	17
ASD2B1							55	37	8	80	90	42	110	129	68	90	105	48
ASD2B2													140	141	35	130	149	65
ASD2C																119	144	75
ASD2D																144	174	90
ASD3A	60	68	22	100	114	49	210	221	116							85	97	41
ASD3B1							110	91	30	180	203	100	260	287	160	180	211	100
ASD3B2													240	223	110	250	291	134
ASD3C																320	369	162
ASD3D																394	448	186
ASD4B1							170	193	80	340	407	250	460	568	370	310	372	190
ASD4B2													476	429	139	569	629	226
ASD4C																657	738	290
ASD4D																748	843	335
ASD5B1							350	305	105	626	724	368	848	1038	590	672	806	414
ASD5B2													800	904	350	958	1135	556
ASD5C																1029	1241	650
ASD5D																1333	1590	800
ASD6B1							545	639	182	1244	1485	800	1583	1998	1250	1350	1650	900
ASD6B2													1300	1518	650	2057	2439	1200
ASD6C																2363	2811	1400
ASD6D																2768	3275	1600



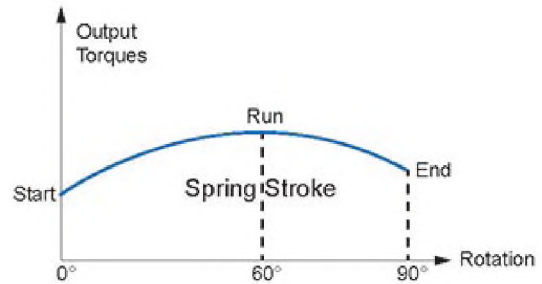
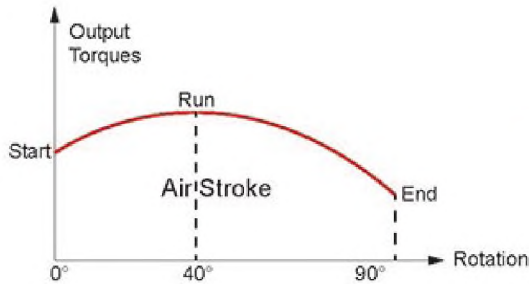
ASD Actuator Output Torques (Nm)

型号 Size	气源压力 Air Strock at Presure (BAR)												弹簧回复 Spring Strock		
	4.1			4.8			5.5			6.2			Start (90°)	Run (60°)	End (0°)
	Start (0°)	Run (40°)	End (90°)	Start (0°)	Run (40°)	End (90°)	Start (0°)	Run (40°)	End (90°)	Start (0°)	Run (40°)	End (90°)			
ASD2A													34	39	17
ASD2B1													90	105	48
ASD2B2	170	198	68	220	254	100							130	149	65
ASD2C	132	144	50	154	187	79	187	230	108				119	144	75
ASD2D				148	185	64	180	217	92	213	261	120	144	174	90
ASD3A													85	97	41
ASD3B1													180	211	100
ASD3B2	280	323	179	370	422	247							250	291	134
ASD3C	270	288	108	350	393	175	440	498	248				320	369	162
ASD3D				302	300	104	378	404	171	508	517	240	394	448	186
ASD4B1													310	372	190
ASD4B2	654	671	276	840	921	420							569	629	226
ASD4C	685	691	250	826	919	400	1092	1165	552				657	738	290
ASD4D				697	696	214	886	941	369	1105	1156	488	748	843	335
ASD5B1													672	806	414
ASD5B2	1100	1302	630	1400	1701	930							958	1135	556
ASD5C	826	1137	560	1290	1586	865	1581	1994	1150				1029	1241	650
ASD5D				1056	1213	760	1571	1852	1080	1773	2070	1330	1333	1590	800
ASD6B1													1350	1650	900
ASD6B2	1886	2147	1200	2502	3038	1800							2057	2439	1200
ASD6C	1523	1589	1100	2267	2550	1700	2933	2870	2200				2363	2811	1400
ASD6D				1765	2773	1500	2800	3282	2000	3544	4272	2700	2768	3275	1600



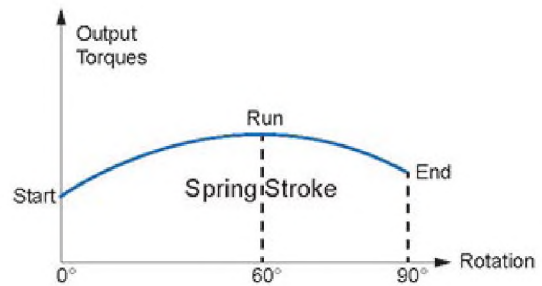
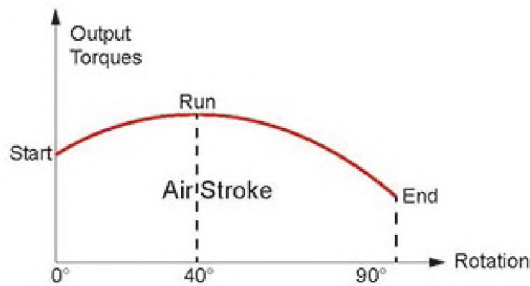
ASD Actuator Output Torques(in.lbs)

型号 Size	气源压力 Air Strock at Presure (PSI)															弹簧回复 Spring Strock		
	15			20			30			40			50			Start (90°)	Run (60°)	End (0°)
	Start (0°)	Run (40°)	End (90°)	Start (0°)	Run (40°)	End (90°)	Start (0°)	Run (40°)	End (90°)	Start (0°)	Run (40°)	End (90°)	Start (0°)	Run (40°)	End (90°)			
ASD2A	229	302	92	423	498	254	870	916	632							301	345	150
ASD2B1							504	339	73	698	785	366				797	929	425
ASD2B2													1257	1266	314	1151	1319	575
ASD2C																1053	1274	664
ASD2D																1274	1540	797
ASD3A	549	623	201	939	1070	460	1923	2023	1062							752	858	363
ASD3B1							1007	833	275	1569	1770	872	2334	2576	1436	1593	1867	885
ASD3B2													2154	2002	987	2213	2575	1186
ASD3C																2832	3266	1434
ASD3D																3487	3965	1646
ASD4B1							1556	1767	732	2965	3549	2180	4129	5098	3321	2744	3292	1682
ASD4B2													4272	3851	1248	5036	5567	2000
ASD4C																5814	6531	2567
ASD4D																6620	7461	2965
ASD5B1							3204	2792	961	5458	6313	3209	7611	9317	5296	5947	7133	3664
ASD5B2													7181	8114	3141	8478	10045	4921
ASD5C																9107	10983	5753
ASD5D																11797	14072	7080
ASD6B1							4990	5850	1666	10847	12948	6975	14208	17933	11220	11948	14603	7965
ASD6B2													11668	13625	5834	18204	21585	10620
ASD6C																20913	24877	12390
ASD6D																24497	28984	14160



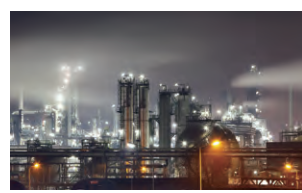
ASD Actuator Output Torques (in.lbs)

型号 Size	气源压力 Air Strock at Presure (PSI)											弹簧回复 Spring Strock			
	60			70			80			90			Start (90°)	Run (60°)	End (0°)
	Start (0°)	Run (40°)	End (90°)	Start (0°)	Run (40°)	End (90°)	Start (0°)	Run (40°)	End (90°)	Start (0°)	Run (40°)	End (90°)			
ASD2A													301	345	150
ASD2B1													797	929	425
ASD2B2	1518	1769	607	1958	2261	890							1151	1319	575
ASD2C	1179	1286	447	1371	1664	703	1660	2042	959				1053	1274	664
ASD2D				1317	1647	570	1598	1926	817	1887	2312	1063	1274	1540	797
ASD3A													752	858	363
ASD3B1													1593	1867	885
ASD3B2	2501	2885	1599	3293	3756	2199							2213	2575	1186
ASD3C	2412	2572	965	3115	3498	1558	3906	4421	2202				2832	3266	1434
ASD3D				2688	2670	926	3356	3587	1518	4501	4581	2126	3487	3965	1646
ASD4B1													2744	3292	1682
ASD4B2	5841	5993	2465	7477	8198	3738							5036	5567	2000
ASD4C	6118	6172	2233	7352	8180	3560	9694	10343	4901				5814	6531	2567
ASD4D				6204	6195	1905	7866	8354	3276	9790	10242	4324	6620	7461	2965
ASD5B1													5947	7133	3664
ASD5B2	9825	11629	5627	12461	15140	8278							8478	10045	4921
ASD5C	7378	10156	5002	11482	14117	7699	14036	17702	10209				9107	10983	5753
ASD5D				9399	10797	6765	13947	16442	9588	15709	18340	11784	11797	14072	7080
ASD6B1													11948	14603	7965
ASD6B2	16846	19177	10718	22270	27041	16022							18204	21585	10620
ASD6C	13603	14193	9825	20178	22697	15131	26038	25479	19531				20913	24877	12390
ASD6D				15710	24682	13351	24858	29137	17755	31399	37849	23922	24497	28984	14160



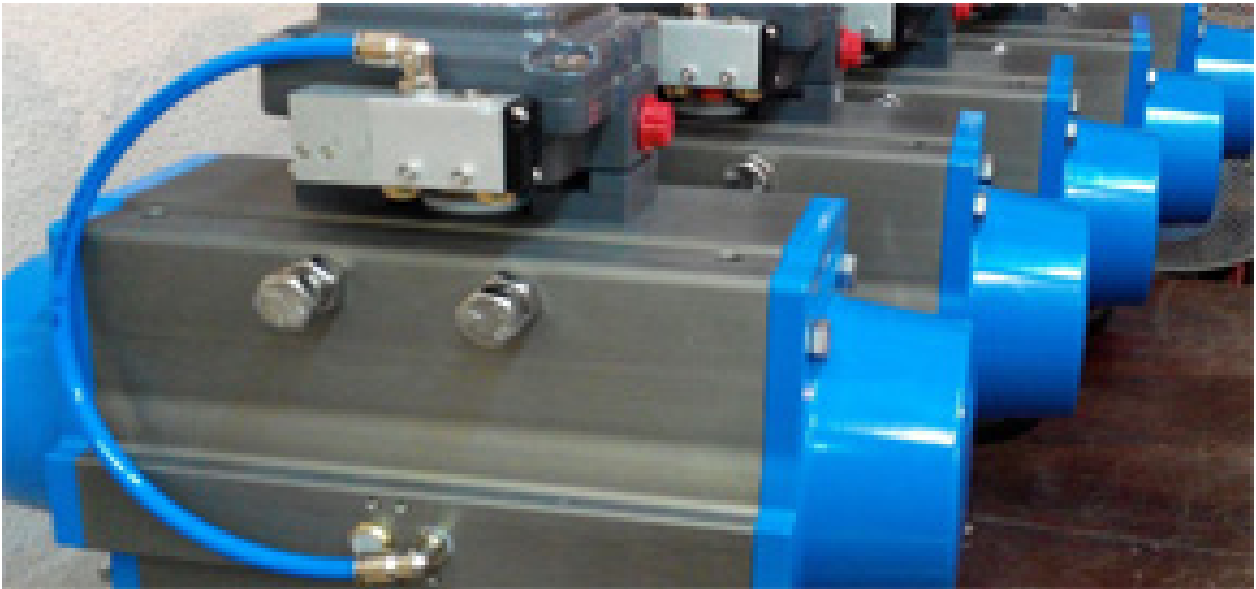
ALF系列四活塞气动执行器

ALF Series Four Pistons Pneumatic Actuators



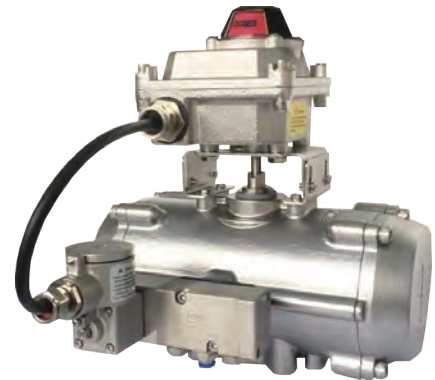
- Four piston have the characteristics of small size, big output and high efficiency
四活塞执行器具有大扭矩，小体积，高效能的特点
- Rotary travel: $0^{\circ} \sim 90^{\circ}$ with $\pm 5^{\circ}$ adjustment at closed and open stops
角行程 $0^{\circ} \sim 90^{\circ}$ ，外置双限位调节器
- Shorter working travel distance and faster cycle times.
工作行程短，打开关闭速度快

General Solenoid Valves



ALV系列电磁阀

ALV Series Solenoid Valves



- Suitable for Namur or in-line air connection
可供管接式或板接式
- Available with 3/2, 5/2 or 5/3 with aluminum or SS316 body
可供不锈钢或铝合阀体，可选3/2，5/2 or 5/3
- Capable with low power consumption and big flow rate
ALV系列低功耗大流量电磁阀已成为行业领先技术
- Certified for use in all hazardous areas
严酷检测核准可用于工业危险场所的0区、1区和2区

Approved by/ 获准证书

ALV410F1C0A

Based on NAMUR standard(40*45), the ALV410F1C0A AICHEM NAMUR solenoid valve can be directly mounted on actuator with 3/2 NC functions for controlling single-acting pneumatic actuators. Working pressure from 2 bar to 8 bar and the working voltage from 12-48VDC, 110-240VAC.



ALV410F2C0A

Based on NAMUR standard(40x45), the ALV410F2C0A AICHEM NAMUR solenoid valve can be directly mounted on actuator with 5/2 functions for controlling double-acting pneumatic actuators. Working pressure from 2 bar to 8 bar and the working voltage from 12-48VDC, 110-240VAC.



ALV410P2C0A

The ALV410P2C0A AICHEM IN-LINE solenoid valve is with 5/2 function and can be remotely mounted for controlling double-acting pneumatic actuators. Working pressure from 2 bar to 8 bar and the working voltage from 12-48VDC, 110-240VAC.



ALV310F1C0A

Based on NAMUR standard, the ALV310F1C0A AICHEM NAMUR solenoid valve can be directly mounted on actuator with 3/2 NC functions for controlling single-acting pneumatic actuators. Working pressure from 2 bar to 8 bar and the working voltage from 12-48VDC, 110-240VAC.



ALV310F2C0A

Based on NAMUR standard(24*32), the ALV310F2C0A AICHEM NAMUR solenoid valve can be directly mounted on actuator with 5/2 functions for controlling double-acting pneumatic actuators. Working pressure from 2 bar to 8 bar and the working voltage from 12-48VDC, 110-240VAC.



ALV310P2C0D

The ACHEM MONO-STABLE SOLENOID VALVE functions as 5/2 spring return and normally closed and is available for the operation of double acting pneumatic devices. Working pressure from 2 bar to 8 bar and the working voltage 12- 48VDC, 110-240VAC.



ALV320F3C0D

Based on NAMUR standard(24*32). For 5/2 function, the spool valve can be directly mounted to the Namur interface of the pneumatic actuator. For 3/2NC function, armed with 3/2 Namur interface plate provided, the spool valve also can be mounted to the Namur interface of the pneumatic actuator. Working pressure from 2 bar to 8 bar and the working voltage from 12VDC.



ALV320F4C0A

Based on NAMUR standard(24x32), the ALV320F4C0A ACHEM NAMUR solenoid valve can be directly mounted on actuator with 5/3 functions for controlling three positions of double-acting pneumatic actuators. Working pressure from 2 bar to 8 bar and the working voltage from 12-48VDC, 110-240VAC.



ALV510F3C0D

Based on NAMUR standard (32*24), the ALV510F3C0D ACHEM NAMUR solenoid valve can be adapted for 3/2 NC or 5/2 functions for controlling double-acting and single-acting pneumatic actuators. Working pressure from 2 bar to 8 bar and the working voltage from 12-48VDC, 110-240VAC.



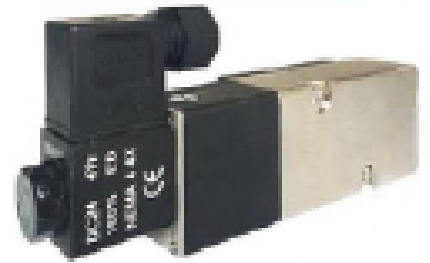
ALV510F3CF

The same ACHEM NAMUR solenoid valve can be adapted for 3/2 NC or 5/2 functions for controlling double-acting and single-acting pneumatic actuators in the area of OUTDOOR. Armed with "environmentally-protected structure" and thermoplastic encapsulated pull-type solenoid coil, ALV510F3CF can offer excellent environmental protection against the ingress of liquids, dusts or other foreign matter.



ALV512F3C0D

Based on NAMUR standard, the same AICHEM STAINLESS STEEL NAMUR solenoid valve can be adapted for 3/2 NC or 5/2 functions for controlling double-acting and single-acting pneumatic actuators. Armed with the stainless steel(316) body, this solenoid valve is excellent for use in corrosive atmospheres. Working pressure from 2bar to 8 bar and the working voltage from 12-48VDC, 110-240VA



ALV510P1C0B

The IN-LINE SOLENOID VALVE functions as 3/2 and is available for the operation of spring return pneumatic actuators. Working pressure from 2 bar to 8 bar and the working voltage from 12- 48VDC, 110-240VAC.

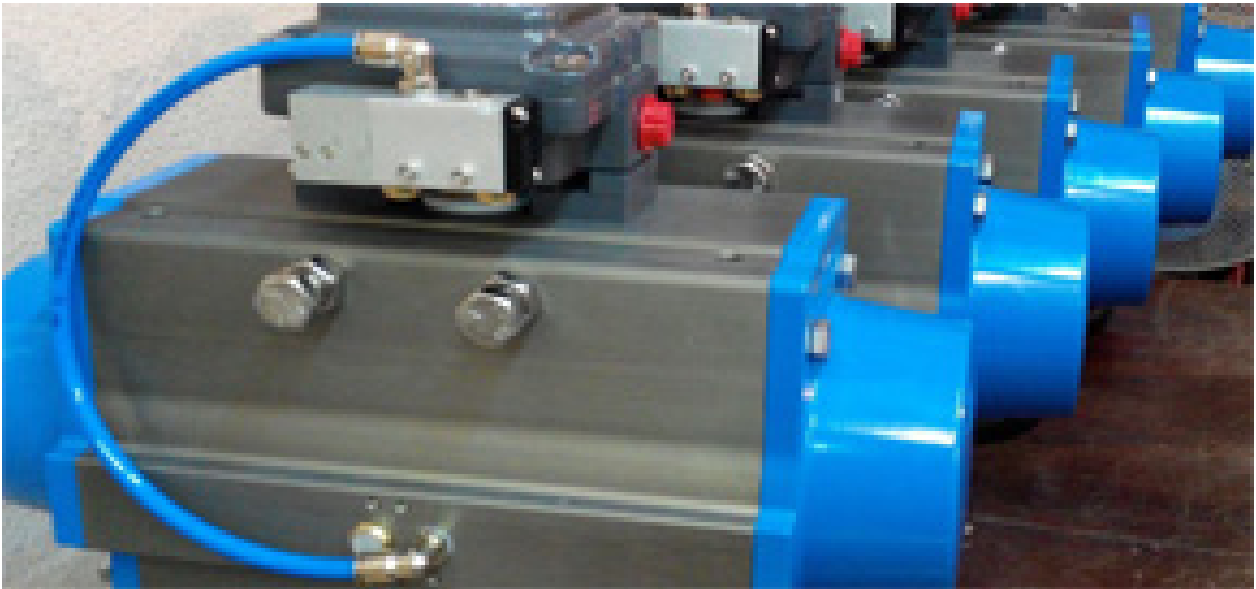


ALV520F3C0B

Based on NAMUR Standard (32*24), the ALV520F3C0B AICHEM NAMUR solenoid valve functions as 5/2 or 3/2NC and is available for the operation of double-acting and spring-return pneumatic actuators. Working pressure from 2 bar to 8 bar and the working voltage is from 12-48VDC, 110-240VAC..

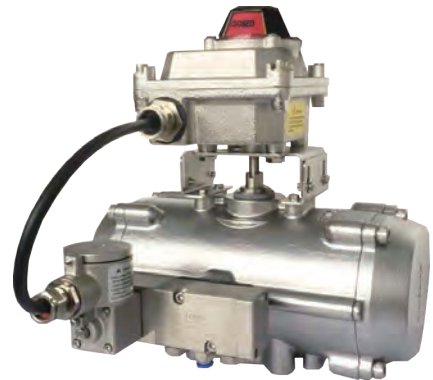


Flame-proof solenoid valve



ALV系列电磁阀

ALV Series Solenoid Valves



- Suitable for Namur or in-line air connection
可供管接式或板接式
- Available with 3/2, 5/2 or 5/3 with aluminum or SS316 body
可供不锈钢或铝合阀体，可选3/2，5/2 or 5/3
- Capable with low power consumption and big flow rate
ALV系列低功耗大流量电磁阀已成为行业领先技术
- Certified for use in all hazardous areas
严酷检测核准可用于工业危险场所的0区、1区和2区

Approved by/ 获准证书

ALV010Q1C5

Direct acting spring return normally closed solenoid valve with Ex d HC T6 aluminium enclosure coil. According to the CNOMO-30 standard, this solenoid valve can be directly attached to various flow pneumatic valves to implement pilot control.



ALV012Q1C4

Direct acting spring return normally closed solenoid valve with Ex d IIC T6 aluminium enclosure coil. According to the CNOMO-30 standard, this solenoid valve can be directly attached to various flow pneumatic valves to implement pilot control.



ALV110F1C5

Direct acting spring return normally closed solenoid valve with Ex d IIC T6 aluminium enclosure coil. According to the Namur standard, this solenoid valve can be directly attached to single acting pneumatic actuator located in hazardous (Ex d IIC T6) area for pneumatic control.



ALV112F1C4

Direct acting spring return normally closed solenoid valve with Ex d HC T6 aluminium enclosure coil. According to the Namur standard, this solenoid valve can be directly attached to single acting pneumatic actuator located in hazardous (Ex d HC T6) area for pneumatic control.



ALV010Q1C5-210F2

This solenoid valve is composed of explosion-proof direct solenoid valve and large flow spool valve. The spool valve functions as 5/2 spring return and is available for the operation of double acting pneumatic devices located in hazardous area (Class I Zone I AEx d IIC T6 Gb). 3/NC is available.



ALV010Q1C5-410F2

This solenoid valve is composed of explosion-proof direct solenoid valve and large flow spool valve. The spool valve functions as 5/2 spring return and is available for the operation of double acting pneumatic devices located in hazardous area (Class I Zone I AEx d IIC T6 Gb). 3/2NC available with plug.



ALV010Q1C5-410P1

This solenoid valve is composed of explosion-proof direct solenoid valve and large flow spool valve. The spool valve functions as 3/2 NC spring return and is available for the operation of single acting pneumatic devices located in hazardous area (Class I Zone I AEx d IIC T6 Gb).



ALV310F2C5

Based on NAMUR standard(32x24), the ALV310F2C5 ACHEM FLAMEPROOF NAMUR solenoid valve can be directly mounted for controlling double-acting pneumatic actuators which located in hazardous area(Zone 1 &2). Working pressure from 2 bar to 8 bar and the working voltage from 12- 48VDC, 110-240VAC.



ALV320F2C5

Based on NAMUR standard 24*32), the ALV320F2C5 ACHEM NAMUR solenoid valve can be directly mounted on actuator with 5/2 functions and bistable for controlling double-acting pneumatic actuators. Working pressure from 2 bar to 8 bar and the working voltage from 12-48VDC, 110-240VAC



ALV310F1C5

Based on NAMUR standard(32x24), the ALV310F1C5 ACHEM FLAMEPROOF NAMUR solenoid valve can be directly mounted for controlling spring-return pneumatic actuators which located in hazardous area(Zone 1 &2). Working pressure from 2 bar to 8 bar and the working voltage from 12- 48VDC, 110-240VAC.



ALV510F3C5

Based on NAMUR standard (32x24), the ALV510F3C5 ACHEM NAMUR solenoid valve functions as 5/2 or 3/2NC and is available for the operation of double-acting and spring-return pneumatic actuators which located in hazardous (Ex d IIC T5 Gb) area. Working pressure from 2 bar to 8 bar and the working voltage from 12-48VDC, 110-240VAC.



ALV520F3C5

Based on NAMUR standard (32x24), the ALV520F3C5 AICHEM NAMUR solenoid valve functions as 5/2 or 3/2NC and is available for the operation of double-acting and spring-return pneumatic actuators which located in hazardous (Ex d IIC T6 Gb) area. Working pressure from 2 bar to 8 bar and the working voltage from 12-48VDC, 110-240VAC.



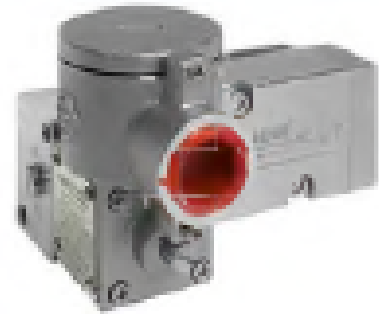
ALV510P1C5

The ALV510P1C5 is in-line solenoid valve functions as 3/2 and is available for the operation of spring-return pneumatic actuators which located in hazardous (Ex d IIC T6) area. Working pressure from 2 bar to 8 bar and the working voltage from 12-48VDC, 110-240VAC.



ALV512F3C4

Based on NAMUR standard (32*24), the ALV512F3C4 solenoid valve can be adapted for 3/2 NC or 5/2 functions for controlling double-acting and spring-return pneumatic actuators. Armed with stainless steel enclosure coil and spool valve, it is excellent for being used in hazardous and corrosive area.



ALV010Q1C5-610P2

This solenoid valve is composed of explosion-proof direct solenoid valve and large flow spool valve. The spool valve functions as 5/2 spring return and is available for the operation of double acting pneumatic devices located in hazardous area (Class I Zone I AEx d IIC T6 Gb). 3/2NC available with plug.

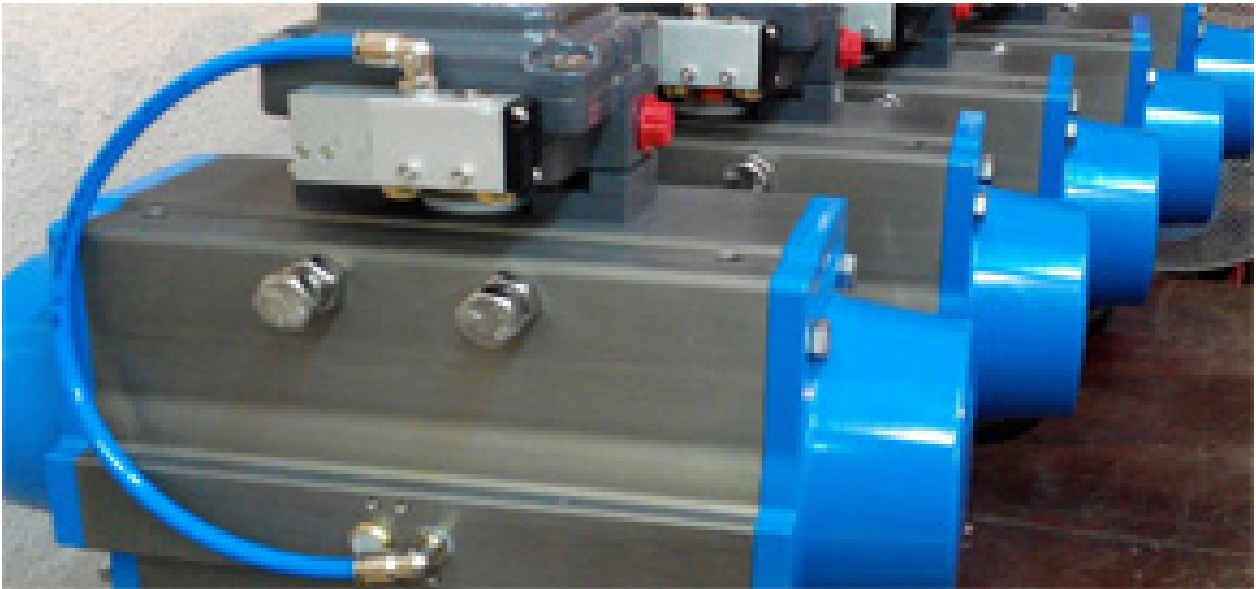


ALV010Q1C5-710P2

This solenoid valve is composed of explosion-proof direct solenoid valve and large flow spool valve. The spool valve functions as 5/2 spring return and is available for the operation of double acting pneumatic devices located in hazardous area (Class I Zone I AEx d IIC T6 Gb). 3/2NC available with plug.



Valve Monitors(IP67)





ALS系列限位开关

ALS Series Valve Monitors (Limit Switch Boxes)



- Suitable for use on rotary and linear applications
适用于角行程和直行程阀位信号的感知和传送
- Certified for use in all hazardous areas
严酷检测核准可用于工业危险场所的0区、1区和2区
- Suitable for internal switches, sensors and/or feedback configurations
位置传感器可选机械微动开关、电感开关和磁感开关或阀位反馈单元
- Technology leader in automated on/off valves
国内阀位传感反馈技术的领先制造商

Approved by/ 获准证书

ALS20PM2

The ALS20PM2 series plastic valve monitor is a rotary position indication device. Armed with mechanical switch this device can sense mechanical position (on/off) of valve for remote PLC or PC indication. The visual indicator on the top of the device can also clearly display the valve position for local detection.



ALS200M2

The ALS200M2 series valve monitor is a rotary position indication device. Armed with mechanical switch this device can sense mechanical position (on/off) of valve for remote PLC or PC indication. The visual indicator on the top of the device can also clearly display the valve position for local detection.



ALS200PA23

The ALS200PA23 series valve monitor is a rotary position indication device. Armed with induction sensors this device can sense mechanical position (on/off) of valve for remote PLC or PC indication. The visual indicator on the top of the device can also clearly display the valve position for local detection.



ALS200PP22

The ALS200PP22 valve monitor is a rotary position indication device. Armed with induction sensors this device can sense mechanical position (on/off) of valve for remote PLC or PC indication. The visual indicator on the top of the device can also clearly display the valve position for local detection.



ALS200QA23

The ALS200QA23 valve monitor is a rotary position indication device. Armed with magnet sensors this device can sense mechanical position (on/off) of valve for remote PLC or PC indication. The visual indicator on the top of the device can also clearly display the valve position for local detection.



ALS200M2

The ALS200M2 series valve monitor is a rotary position indication device. Armed with mechanical switch this device can sense mechanical position (on/off) of valve for remote PLC or PC indication. The visual indicator on the top of the device can also clearly display the valve position for local detection.



ALS200PA23

The ALS200PA23 series valve monitor is a rotary position indication device. Armed with inductive sensors this device can sense mechanical position (on/off) of valve for remote PLC or PC indication. The visual indicator on the top of the device can also clearly display the valve position for local detection.



ALS206M2

The ALS206M2 series stainless steel valve monitor is a rotary position indication device for CORROSIVE area. Armed with mechanical switch, this device can sense mechanical position (on/off) of valve for remote PLC or PC indication. The visual indicator on the top of the device can also clearly display the valve position for local detection.



ALS200D

Valve Indicator(ALS200D) is a rotary position indication device, use two reed switches and two permanent magnets. They are encased in a plastic housing for protection and ease of mounting. The reed switches mounted on the top of actuator and the permanent magnets mounted on the stem of the actuator. Each switch and magnet complete a circuit when the actuator/valve closed/opened. The circuit breaks when the actuator/valve opened/closed. This device can sense mechanical position (on/off) of valve for remote PLC or PC indication. The visual indicator on the top of the device can also clearly display the valve position for local detection.



ALS300M2

The ALS300M2 valve monitor is a rotary position indication device. Armed with mechanical switch, this device can sense mechanical position (on/off) of valve for remote PLC or PC indication. The visual indicator on the top of the device can also clearly display the valve position for local detection.



ALS300M2F

The ALS300M2F position transmitter valve monitor is a rotary position indication device. Armed with mechanical switch and the position transmitter this device can sense mechanical position (on/off) as well as the position change (0 to 90 degrees) of valve and output 4-20 mA for remote PLC or PC indication. The visual indicator on the top of the device can also clearly display the valve position for local detection.



ALS300M3

The ALS300M3 valve monitor is a rotary position indication device. Armed with mechanical switch (3-SPDT), this device can sense three mechanical positions separately of valve for remote PLC or PC indication. The visual indicator on the top of the device can also clearly display the valve position for local detection.



ALS300M4

The ALS300M4 valve monitor is a rotary position indication device. Armed with mechanical switch (4-SPDT), this device can sense four mechanical positions separately of valve for remote PLC or PC indication. The visual indicator on the top of the device can also clearly display the valve position for local detection.



ALS300M5

The ALS300M5 valve monitor is a rotary position indication device. Armed with mechanical switch (2-DPDT), this device can doublely sense valve positions (on/off) for remote PLC or PC indication and control. The visual indicator on the top of the device can also clearly display the valve position for local detection.



ALS300PA22

The ALS300PA22 series valve monitor is a rotary position indication device. Armed with inductive sensors, this device can sense mechanical position (on/off) of valve for remote PLC or PC indication. The visual indicator on the top of the device can also clearly display the valve position for local detection.



ALS300PA23

The ALS300PA23 series valve monitor is a rotary position indication device. Armed with inductive sensors, this device can sense mechanical position (on/off) of valve for remote PLC or PC indication. The visual indicator on the top of the device can also clearly display the valve position for local detection.



ALS300PA23F

The ALS300PA23F position transmitter valve monitor is a rotary position indication device. Armed with inductive sensor and the position transmitter this device can sense mechanical position (on/off) as well as the position change (0° to 90°) of valve and output 4-20mA for remote PLC or PC indication. The visual indicator on the top of the device can also clearly display the valve position for local detection.



ALS300PP22

The ALS300PP22 valve monitor is a rotary position indication device. Armed with inductive sensors, this device can sense mechanical position (on/off) of valve for remote PLC or PC indication. The visual indicator on the top of the device can also clearly display the valve position for local detection.



ALS300QA23

The ALS300QA23 valve monitor is a rotary position indication device. Armed with magnet sensors, this device can sense mechanical position (on/off) of valve for remote PLC or PC indication. The visual indicator on the top of the device can also clearly display the valve position for local detection.



ALS300AS2

The AS-i valve monitor is a rotary valve position indication device which can directly communicate with AS-i master. Armed with AICHEM I/O+Sensor Module, the device can sense the valve position (on/off), communicate with ASI master and output voltage (24VDC-1.5W) to operate the solenoid valves or relays based on the command from Master and PC.

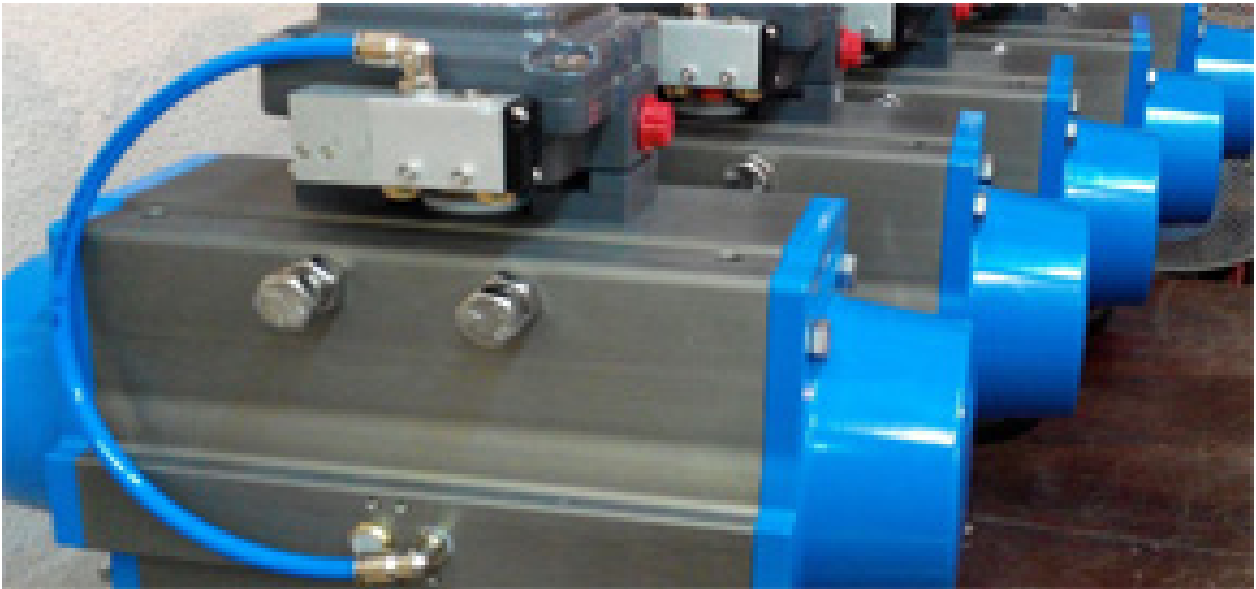


ALS300LM2

The ALS300LM2 valve monitor is a linear position indication device. Armed with mechanical switch, this device can sense mechanical position (on/off) of the linear valve for remote PLC or PC indication. The visual indicator on the top of the device can also clearly display the valve position for local detection.



Valve Monitors(Exd)





ALS系列限位开关

ALS Series Valve Monitors (Limit Switch Boxes)



- Suitable for use on rotary and linear applications
适用于角行程和直行程阀位信号的感知和传送
- Certified for use in all hazardous areas
严酷检测核准可用于工业危险场所的0区、1区和2区
- Suitable for internal switches, sensors and/or feedback configurations
位置传感器可选机械微动开关、电感开关和磁感开关或阀位反馈单元
- Technology leader in automated on/off valves
国内阀位传感反馈技术的领先制造商

Approved by/ 获准证书

ALS400M2

The ALS400M2 series flameproof valve monitor is a rotary position indication device in HAZARDOUS area(Ex d IIC T6). Armed with mechanical switch, this device can sense valve position (on/off) for remote PLC or PC indication. The visual indicator on the top of the device can also clearly display the valve position for local detection.



ALS400M2F

The ALS400M 2F series position transmitter valve monitor is a rotary position indication device in HAZARDOUS area (Exd IIC T6). Armed with mechanical switch and the position transmitter this device can sense mechanical position (on/off) as well as the position change (0 to 90) of valve and output 4-20mA for remote PLC or PC indication. The visual indicator on the top of the device can also clearly display the valve position for local detection.



ALS400M4

The ALS400M3 series flameproof valve monitor is a rotary position indication device in HAZARDOUS area (Ex d IIC T6). Armed with mechanical switch (3-SPDT), this device can sense three mechanical positions of valve separately for remote PLC or PC indication. The visual indicator on the top of the device can also clearly display the valve position for local detection.



ALS400M4

The ALS400 series flameproof valve monitor is a rotary position indication device in HAZARDOUS area(Ex d IIC T6). Armed with mechanical switch(4-SPDT), this device can sense four mechanical positions of valve separately for remote PLC or PC indication. The visual indicator on the top of the device can also clearly display the valve position for local detection.



ALS400M5

The ALS400M5 series flameproof valve monitor is a rotary position indication device in HAZARDOUS area(Ex d IIC T6). Armed with mechanical switch(2-DPDT), this device can doublely sense valve positions (on/off) for remote PLC or PC indication and control. The visual indicator on the top of the device can also clearly display the valve position for local detection.



ALS400PA23

The ALS400PA23 series flameproof valve monitor is a rotary position indication device in HAZARDOUS area (Exd IIC T6). Armed with inductive sensors, this device can sense valve position (on/of) for remote PLC or PC indication. The visual indicator on the top of the device can also clearly display the valve position for local detection.



ALS400PP22

The ALS400 series flameproof valve monitor is a rotary position indication device in HAZARDOUS area (Exd IIC T6). Armed with mechanical switch, inductive or magnet sensors this device can sense mechanical position (on/of) of the valve for remote PLC or PC indication. The visual indicator on the top of the device can also clearly display the valve position for local detection.



ALS400QA23

The ALS400 series flameproof valve monitor is a rotary position indication device in HAZARDOUS area (Exd IIC T6). Armed with magnet sensors this device can sense mechanical position (on/of) of the valve for remote PLC or PC indication. The visual indicator on the top of the device can also clearly display the valve position for local detection.



ALS400AS2

The AS-i flameproof valve monitor is a rotary valve position indication device which can directly communicate with AS-i master in HAZARDOUS area (Ex d IIB T6). Armed with AICHEM MO+sensors Module, the device can sensor the valve position (on/off), communicate with ASI master and output voltage (24VDC-1.5W) to operate the solenoid valves or relays based on the command from Master and PC.



ALS600M2

The ALS600M2 series stainless steel flameproof valve monitor is a rotary position indication device for CORROSIVE and HAZARDOUS area (Exd IIB T6). Armed with mechanical switch, this device can sense mechanical position (on/of) of the valve for remote PLC or PC indication. The visual indicator on the top of the device can also clearly display the valve position for local detection.



ALS600M3

The ALS600M3 series stainless steel flameproof valve monitor is a rotary position indication device for CORROSIVE and HAZARDOUS area (Exd IIB T6). Armed with mechanical switch (3-SPDT), this device can sense three mechanical positions separately of valve for remote PLC or PC indication. The visual indicator on the top of the device can also clearly display the valve position for local detection.



ALS600M4

The ALS600M4 series stainless steel flameproof valve monitor is a rotary position indication device for CORROSIVE and HAZARDOUS (Ex d MB T6) area. Armed with mechanical switch(4- SPDT), this device can sense four mechanical positions separately of valve for remote PLC or PC indication. The visual indicator on the top of the device can also clearly display the valve position for local detection.



ALS600M5

The ALS600M5 series stainless steel flameproof valve monitor is a rotary position indication device for CORROSIVE and HAZARDOUS (Ex d IIB T6) area. Armed with mechanical switch(2- DPDT), this device can doubly sense valve positions (on/off) for remote PLC or PC indication and control. The visual indicator on the top of the device can also clearly display the valve position for local detection.



ALS600PA23

The ALS600PA23 series stainless steel flameproof valve monitor is a rotary position indication device for CORROSIVE and HAZARDOUS (Ex d IIB T6) area. Armed with inductive sensors this device can sense mechanical position (on/off) of the valve for remote PLC or PC indication. The visual indicator on the top of the device can also clearly display the valve position for local detection.



ALS600PP22

The ALS600PP22 series stainless steel flameproof valve monitor is a rotary position indication device for CORROSIVE and HAZARDOUS (Ex d IIB T6) area. Armed with inductive sensors this device can sense mechanical position (on/off) of the valve for remote PLC or PC indication. The visual indicator on the top of the device can also clearly display the valve position for local detection.



ALS600QA23

The ALS600QA23 series stainless steel flameproof valve monitor is a rotary position indication device for CORROSIVE and HAZARDOUS (Ex d IIB T6) area. Armed with magnet sensors this device can sense mechanical position (on/off) of the valve for remote PLC or PC indication. The visual indicator on the top of the device can also clearly display the valve position for local detection.



ALS600AS2

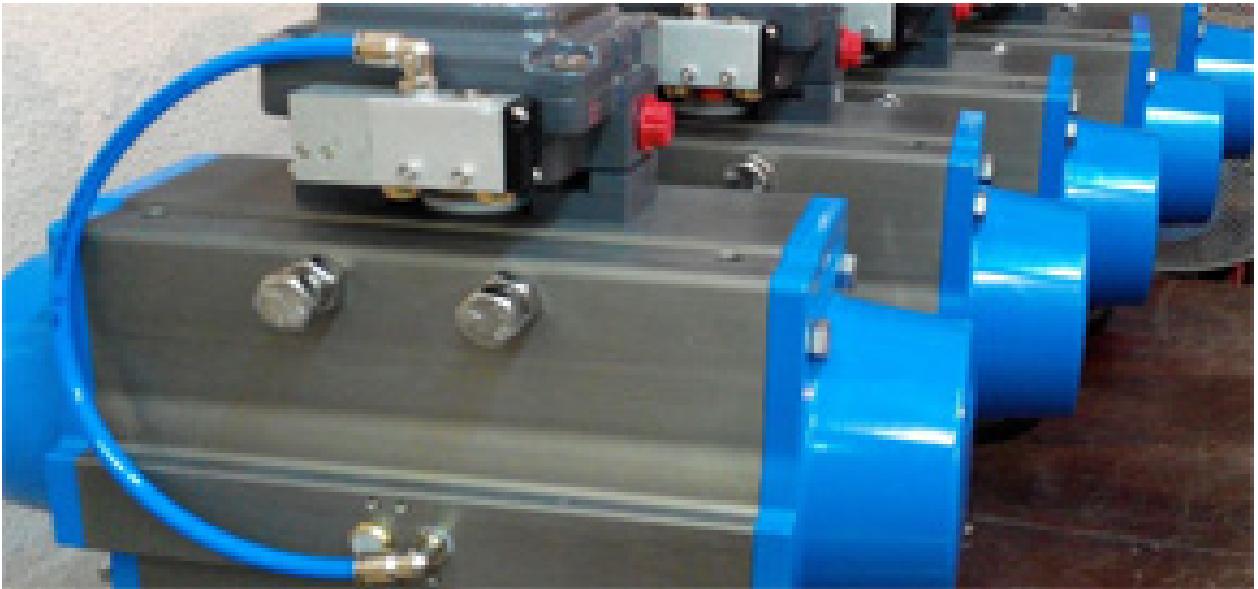
The AS-i flameproof valve monitor is a rotary valve position indication device. Armed with AICHEM I/O+sensor Module, the device can sensor the valve position (on/off), communicate with ASI master and output voltage (24VDC-1.5W) to operate the solenoid valves or relays based on the command from Master and PC.



ALS600LM2

The ALS600LM2 series stainless steel flameproof valve monitor is a linear position indication device for CORROSIVE and HAZARDOUS (Ex d IIB T6) area. Armed with mechanical switch, this device can senses mechanical position (on/off) of the linear valve for remote PLC or PC indication. The visual indicator on the top of the device can also clearly display the valve position for local detection.

Top Valve Controllers





ALSD系列顶部控制器

ALSD Series Top Valve Controller



- Integrated solution for solenoid coil, direction valve and position sensor
电磁线圈、方向阀、阀位传感器一体化最优方案
- The weather proof performance is good and the explosion proof grade is high.
气候防护性能好防爆等级高
- Suitable for use on on/off rotary applications
适用于角行程阀位的开关控制

ALSD500C1S1M2

The valve top controller is an optimizing solution to integrate mechanical sensors, solenoid coil and spool valve together and use for on/off valve control and position sensing in the process industries



ALSD500C1S1QA23

The valve top controller is an optimizing solution to integrate magnet sensors, solenoid coil and spool valve together and use for on/off valve control and position sensing in the process industries



ALSD500C1S1PP22

The valve top controller is an optimizing solution to integrate Inductive sensors, solenoid coil and spool valve together and use for on/off valve control and position sensing in the process industries



ALSD500C1S1PA22

The valve top controller is an optimizing solution to integrate Inductive sensors, solenoid coil and spool valve together and use for on/off valve control and position sensing in the process industries



ALSD400C1S1AS2

The AS-I Flameproof top valve controller is a rotary valve position monitor which integrates I/O module, sensors and solenoid valve together. Armed with AICHEM I/O+Sensor Module, pilot valve position in HAZARDOUS area (Ex d IIB T6) and communicate with ASI master and PC based on AS_I Protocol. The working voltage of the controller is 24VDC-3W and the working air pressure is 2-8Bar.



ALSD400C1S1M2

The valve top controller can sense and control the mechanical position (on/off) of the valve based on electric signals and pressure air supply.



ALSD400C1S1PA22

The valve top controller can sense and control the mechanical position (on/off) of the valve based on electric signals and pressure air supply.



ALSD400C1S1PA23

The valve top controller can sense and control the mechanical position (on/off) of the valve based on electric signals and pressure air supply.



ALSD400C1S1QA23

The valve top controller can sense and control the mechanical position (on/off) of the valve based on electric signals and pressure air supply.



ALSD300C1S1AS2

The AS-I top valve controller is a rotary valve position monitor which integrates I/O module, sensors and solenoid valve together. Armed with AICHEM I/O*Sensor Module, pilot valve and spool valve, the controller can sense, operate the on/off valve position and communicate with ASI master and PC based on AS-I Protocol. The working voltage of the controller is 24VDC-3W and the working pressure is 2-8Bar.



ALSD300C1S1M2

The valve top controller can sense and control mechanical position (on/off) of valve based on electric signals and pressure air supply.



ALSD300C1S1PA22

The valve top controller can sense and control mechanical position (on/off) of valve based on electric signals and pressure air supply.



ALSD300C1S1PA23

The valve top controller can sense and control mechanical position (on/off) of valve based on electric signals and pressure air supply.

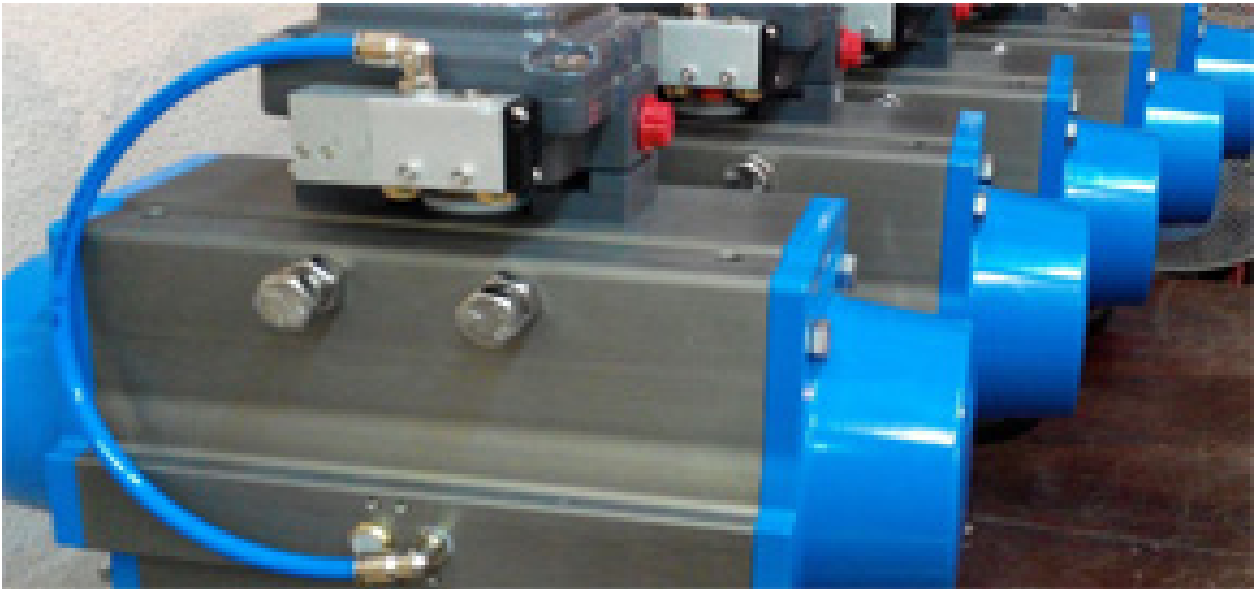


ALSD300C1S1QA23

The valve top controller can sense and control mechanical position (on/off) of valve based on electric signals and pressure air supply.



Rotary Valve Positioners



ALP系列阀门定位器

ALP Series Valve Positioners



- Suitable for use on rotary and linear applications
适用于角行程和直行程的阀位精确控制
- Available to equip with internal or external position transmitter or sensors
可选配内置或外置的阀位变送器或传感器
- Available for Electric-Pneumatic or Pneumatic-Pneumatic Operation
电气定位器或气气定位器均可供选用
- Certified for use in all hazardous areas
严酷检测核准可用于工业危险场所的0区、1区和2区

Approved by/ 获准证书

ALP1000RDn53

Technical Data	
Input signal	4~20mADC(5-15mADC)
Impedance	250±15 Ω
Supply pressure	1.4~7kgf/cm ² (20~100psi)
Air connection	G (NPT) 1/4"
Gauge connection	G (NPT) 1/8"
Conduit	G (NPT) 1/2"
Weather protection	IP66
Ambient temperature	-20°C~70°C
Linearity	±1.5%
Hysteresis	1.50%
Sensitivity	0.40%
Air consumption	3LPM(Sup=1.4kgf/cm ² , 20psi)
Flow capacity	8LPM(Sup=1.4kgf/cm ² , 20psi)
Material	Aluminum Die Casting
Weight	2.7kg(6lb)2.8kg(6.2lb)



ALP1000RDIBn53

Technical Data	
Input signal	4~20mADC(5-15mADC)
Impedance	250±15 Ω
Supply pressure	1.4~7kgf/cm ² (20~100psi)
Air connection	G (NPT) 1/4"
Gauge connection	G (NPT) 1/8"
Conduit	G (NPT) 1/2"
Weather protection	IP66
Ambient temperature	-20°C~70°C
Linearity	±1.5%
Hysteresis	1.50%
Sensitivity	0.40%
Air consumption	3LPM(Sup=1.4kgf/cm ² , 20psi)
Flow capacity	8LPM(Sup=1.4kgf/cm ² , 20psi)
Material	Aluminum Die Casting
Weight	2.7kg(6lb)2.8kg(6.2lb)



ALP1000RDITn53

Technical Data	
Input signal	4~20mADC(5-15mADC)
Impedance	250±15 Ω
Supply pressure	1.4~7kgf/cm ² (20~100psi)
Air connection	G (NPT) 1/4"
Gauge connection	G (NPT) 1/8"
Conduit	G (NPT) 1/2"
Weather protection	IP66
Ambient temperature	-20°C~70°C
Linearity	±1.5%
Hysteresis	1.50%
Sensitivity	0.40%
Air consumption	3LPM(Sup=1.4kgf/cm ² , 20psi)
Flow capacity	8LPM(Sup=1.4kgf/cm ² , 20psi)
Material	Aluminum Die Casting
Weight	2.7kg(6lb)2.8kg(6.2lb)



ALP1200RDn13



Technical Data	
Input signal	0.2~1kgf/cm ² (3~15psi)
Impedance	/
Supply pressure	1.4~7kgf/cm ² (20~100psi)
Air connection	PT (NPT) 1/4"
Gauge connection	PT (NPT) 1/8"
Conduit	/
Weather protection	IP66
Ambient temperature	-20°C~70°C
Linearity	±1.5%
Hysteresis	1.50%
Sensitivity	0.40%
Air consumption	3LPM(Sup=1.4kgf/cm ² , 20psi)
Flow capacity	8LPM(Sup=1.4kgf/cm ² , 20psi)
Material	Aluminum Die Casting
Weight	1.7kg(3.7lb)

ALP3000RDn53



Technical Data	
Input signal	4~20mADC(5-15mADC)
Impedance	235±15 Ω
Supply pressure	1.4~7kgf/cm ² (20~100psi)
Air connection	G (NPT) 1/4"
Gauge connection	G (NPT) 1/8"
Conduit	G (NPT) 1/2"
Weather protection	IP65
Ambient temperature	-20°C~60°C
Linearity	±1.5%
Hysteresis	1.50%
Sensitivity	0.40%
Air consumption	5LPM(Sup=1.4kgf/cm ² , 20psi)
Flow capacity	80LPM(Sup=1.4kgf/cm ² , 20psi)
Material	Aluminum Die Casting
Weight	24kg,2.6kg with junction box

ALP2000RDFn1



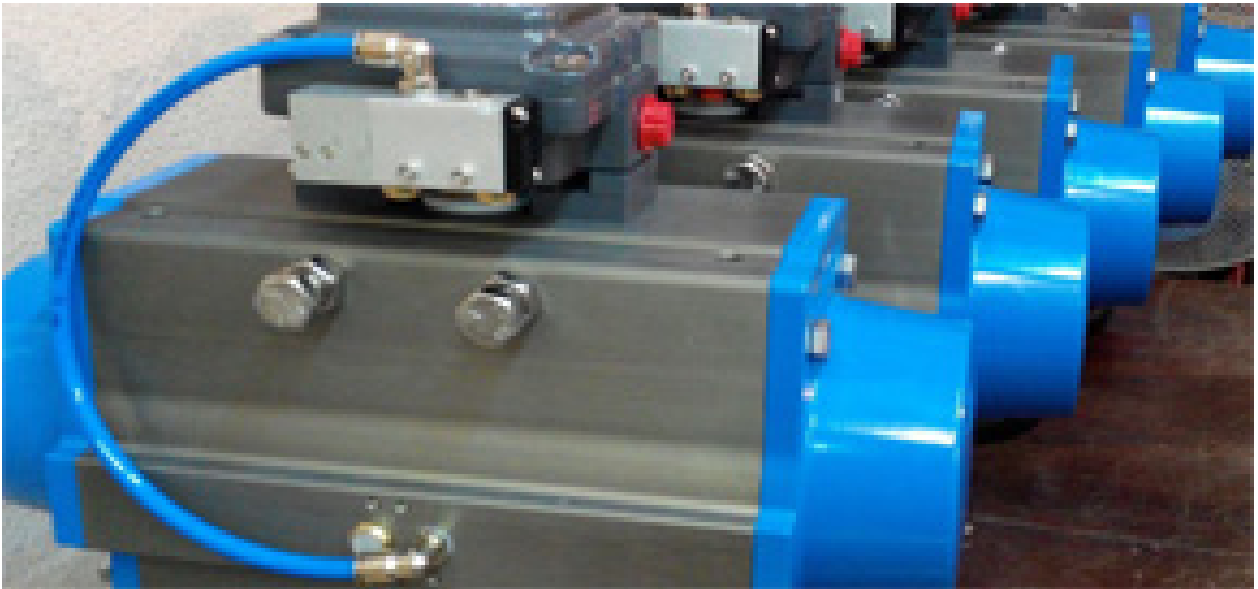
Technical Data	
Input signal	4-20mA(2 wire), minimum 3.6mA
Supply pressure	0.14Mpa-0.7MPa(1.4 Bar - 7 Bar)
Stroke	Linear: 10-100mm, Rotary: 30°-120°
Air connection	1/4BSPP, 1/4NPT
Conduit	M20-1.5, 1/2BSPP, 1/2NPT
Weather proof	IP65
Explosion proof	Exia II CT4-6, or Exd II CT6
Ambient temperature	-20°C~70°C
Linearity	0.5%F.S.
Hysteresis	±1%F.S.
Repeatability	0.2%F.S.
Air consumption	<36L/H
Vibration effect	2G
Dimension	170×96×96mm
Material	Aluminum alloy with polyester powder
Weight	2.0Kg

ALP4000R1Di13

Technical Data	
Input signal	4~20mADC(5-15mADC)
Impedance	250±15 Ω
Supply pressure	1.4~7kgf/cm ² (20~100psi)
Air connection	G (NPT) 1/4"
Gauge connection	G (NPT) 1/8"
Conduit	G (NPT) 1/2"
Weather protection	IP66
Ambient temperature	-20℃~60℃
Linearity	±1.5%
Hysteresis	1.50%
Sensitivity	0.40%
Air consumption	5LPM(Sup=1.4kgf/cm ² , 20psi)
Flow capacity	175LPM(Sup=1.4kgf/cm ² , 20psi)
Material	Aluminum Die Casting
Weight	2.7kg(6lb)2.8kg(6.2lb)



Linear Valve Positioners



ALP系列 阀门定位器

ALP Series Valve Positioners



- Suitable for use on rotary and linear applications
适用于角行程和直行程的阀位精确控制
- Available to equip with internal or external position transmitter or sensors
可选配内置或外置的阀位变送器或传感器
- Available for Electric-Pneumatic or Pneumatic-Pneumatic Operation
电气定位器或气气定位器均可供选用
- Certified for use in all hazardous areas
严酷检测核准可用于工业危险场所的0区、1区和2区

Approved by/ 获准证书

ALP1000LDn13

Technical Data	
Input signal	4~20mADC(5-15mADC)
Impedance	250±15 Ω
Supply pressure	1.4~7kgf/cm ² (20~100psi)
Air connection	G (NPT) 1/4"
Gauge connection	G (NPT) 1/8"
Conduit	G (NPT) 1/2"
Weather protection	IP66
Ambient temperature	-20℃~70℃
Linearity	±1.5%
Hysteresis	1.50%
Sensitivity	0.40%
Air consumption	3LPM(Sup=1.4kgf/cm ² , 20psi)
Flow capacity	8LPM(Sup=1.4kgf/cm ² , 20psi)
Material	Aluminum Die Casting
Weight	2.7kg(6lb)2.8kg(6.2lb)

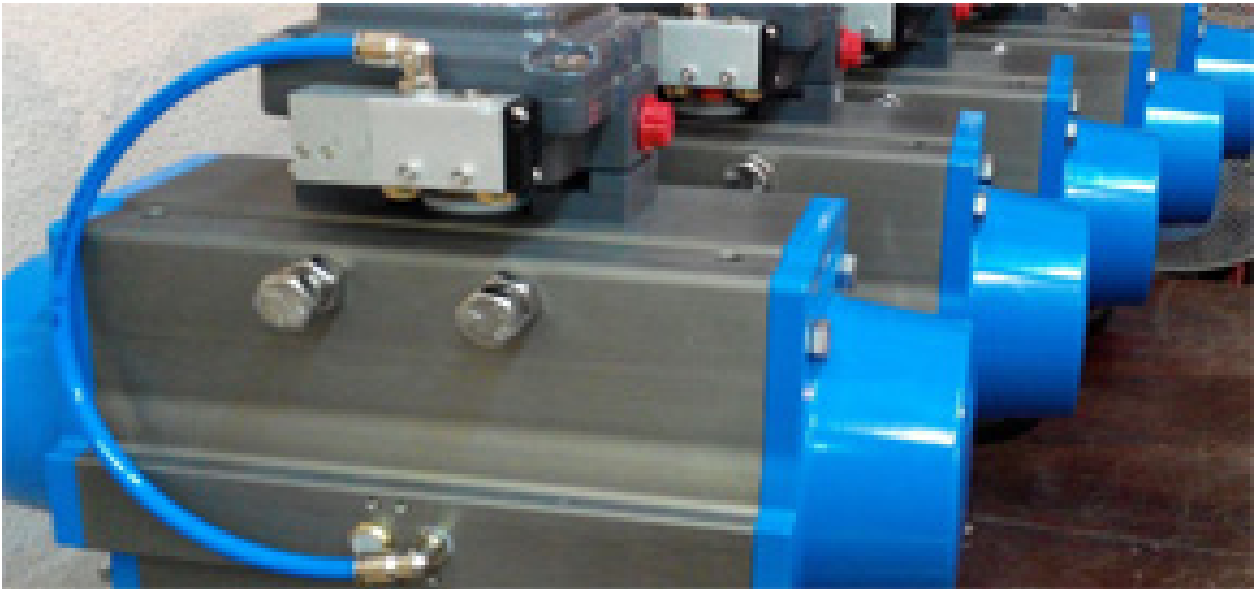


ALP1200LDn13

Technical Data	
Input signal	0.2~1kgf/cm ² (3~15psi)
Impedance	/
Supply pressure	1.4~7kgf/cm ² (20~100psi)
Air connection	PT (NPT) 1/4"
Gauge connection	PT (NPT) 1/8"
Conduit	/
Weather protection	IP66
Ambient temperature	-20℃~70℃
Linearity	±1.5%
Hysteresis	1.50%
Sensitivity	0.40%
Air consumption	3LPM(Sup=1.4kgf/cm ² , 20psi)
Flow capacity	8LPM(Sup=1.4kgf/cm ² , 20psi)
Material	Aluminum Die Casting
Weight	1.7kg(3.7lb)



Intrinsic safe solenoid valve



ALV510F3C7

Based on NAMUR standard (32x24). the ALV510F3C7 AICHEM NAMUR solenoid valve can be adapted for 3/2 NC or 5/2 functions for controlling double-acting and single-acting pneumatic actuators. It is excellent for being used in hazardous area (Ex ia IIC T6 Gb). Working pressure from 2 bar to 8 bar and working voltage is 24VDC.



ALV510P1C7

Based on NAMUR standard (32x24) standard, the ALV510P1C7 AICHEM IN-LINE SOLENOID VALVE functions as 3/2 and is available for the operation of spring-return pneumatic actuators which located in hazardous area (Ex ia IIB T6 Ga). Working pressure from 2 bar to 8 bar and the working voltage is 24VDC.



ALV510F3C3

Based on NAMUR standard (32*24), the ALV510F3C3 AICHEM NAMUR solenoid valve can be adapted for 3/2 NC or 5/2 functions for controlling double-acting and single-acting pneumatic actuators. It is excellent for being used in hazardous area (Ex ia IIC T6). Working pressure from 2 bar to 8 bar and the working voltage is 24VDC.



ALV512F3C3

Based on NAMUR standard (32*24). the ALV512F3C3 AICHEM STAINLESS STEEL NAMUR solenoid valve can be adapted for 3/2 NC or 5/2 functions for controlling double-acting and single-acting pneumatic actuators. It is excellent for being used in hazardous area (Ex ia IIC T6). Working pressure from 2 bar to 8 bar and the working voltage is 24VDC.

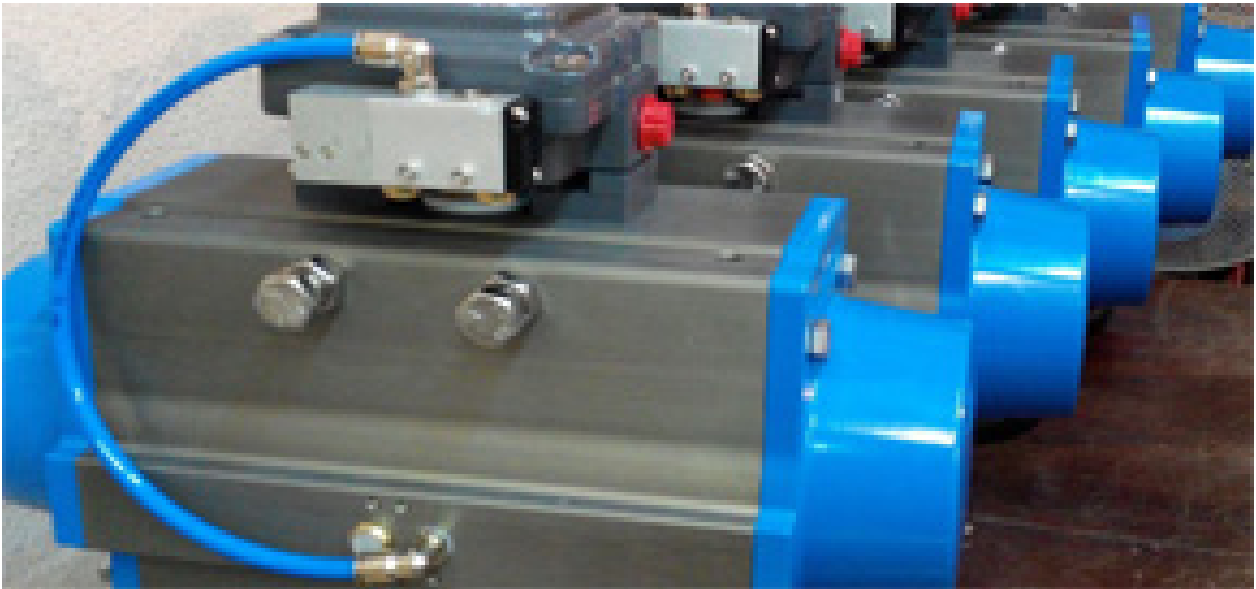


ALV510P1C3

available for the operation of spring-return pneumatic actuators which located in hazardous (Ex ia IIC T6) area. Working pressure from 2 bar to 8 bar and the working voltage is 24VDC.



Actuator Auxiliary Valve



ABV001

Where the pneumatic actuator needs to be isolated from the air control system of the plant, typically in the application of the valve + declutch manual override + actuator, the valve needs to be manual operated by the declutch, the "Block and Vent" will help more in operation. This device provides a local means of blocking the supply air from both solenoid valve and actuator, and at the same time venting all compressed air from both chambers of the actuator. This device is available both for double acting and spring return actuator.



ALV Series QP Valve

ALV Series QP Valve (Quick Exhaust & Breather Protection valve) is a unique design to be used on applications where the pneumatic spring-return actuator/valve need to be shutdown fast. This QP valve also provides a breather protection function which can effectively avoid direct contact between the actuator's spring chambers with corrosive and/or moisture atmosphere air. Here are the main features of the block.



Main technical parameters							
Model No.	Mounting		Port size	Flow rate (Orifice)		Medium	Working Temperature
	To Actuator	To S. V.		Inlet	Outlet		
ALV-QP10F1-02	24×32 Namur	24×32 Namur	1/4"	8mm	9.2mm	less than 40µm filtered and dried air (2-8 bar)	-10°C ~ 60°C
ALV-QP10P1-02		In-line (1/4")		8mm	9.2mm		
ALV-QP10P1-04		In-line (1/2")	1/2"	10mm	10mm		
ALV-QP10P1-06	40×45 Namur	In-line (3/4")	3/4"	12mm	16mm		

ALHV400-1/2" NPT



SPECIFICATIONS	
Working Medium	40 Micron Filtered Air
Port Size	1/2" NPT
Effective Cross Section Area	30 mm ² (CV=1.68)
Working Pressure	0~8 Bar
Ambient Temperature	0~60°C

ASCSA-N

Mounted directly to double acting pneumatic actuators or used with Namur solenoid valves and/or positioners. The Pneumatic Actuator Speed Controller was designed with an advanced throttling technology that was made specifically for the use of controlling the opening and closing speeds of pneumatic actuators. The speed controller is able to control the rotary speed of the actuator at any rate accurately, consistently & safely without the fluctuation that is commonly found in Brass Speed Controls due to vibrations and other difficult hazardous conditions.



ASCSR-N

Mounted directly to spring return pneumatic actuators or used with Namur solenoid valves and/or positioners. The Pneumatic Actuator Speed Controller was designed with an advanced throttling technology that was made specifically for the use of controlling the opening and closing speeds of pneumatic actuators. The speed controller is able to control the rotary speed of the actuator at any rate accurately, consistently & safely without the fluctuation that is commonly found in Brass Speed Controls due to vibrations and other difficult hazardous



Архангельск (8182)63-90-72	Иваново (4932)77-34-06	Магнитогорск (3519)55-03-13	Пермь (342)205-81-47	Сургут (3462)77-98-35
Астана (7172)727-132	Ижевск (3412)26-03-58	Москва (495)268-04-70	Ростов-на-Дону (863)308-18-15	Тверь (4822)63-31-35
Астрахань (8512)99-46-04	Иркутск (395)279-98-46	Мурманск (8152)59-64-93	Рязань (4912)46-61-64	Томск (3822)98-41-53
Барнаул (3852)73-04-60	Казань (843)206-01-48	Набережные Челны (8552)20-53-41	Самара (846)206-03-16	Тула (4872)74-02-29
Белгород (4722)40-23-64	Калининград (4012)72-03-81	Нижний Новгород (831)429-08-12	Санкт-Петербург (812)309-46-40	Тюмень (3452)66-21-18
Брянск (4832)59-03-52	Калуга (4842)92-23-67	Новокузнецк (3843)20-46-81	Саратов (845)249-38-78	Ульяновск (8422)24-23-59
Владивосток (423)249-28-31	Кемерово (3842)65-04-62	Новосибирск (383)227-86-73	Севастополь (8692)22-31-93	Уфа (347)229-48-12
Волгоград (844)278-03-48	Киров (8332)68-02-04	Омск (3812)21-46-40	Симферополь (3652)67-13-56	Хабаровск (4212)92-98-04
Вологда (8172)26-41-59	Краснодар (861)203-40-90	Орел (4862)44-53-42	Смоленск (4812)29-41-54	Челябинск (351)202-03-61
Воронеж (473)204-51-73	Красноярск (391)204-63-61	Оренбург (3532)37-68-04	Сочи (862)225-72-31	Череповец (8202)49-02-64
Екатеринбург (343)384-55-89	Курск (4712)77-13-04	Пенза (8412)22-31-16	Ставрополь (8652)20-65-13	Ярославль (4852)69-52-93
Липецк (4742)52-20-81				

Киргизия (996)312-96-26-47 Казахстан (772)734-952-31 Таджикистан (992)427-82-92-69

www.achem.nt-rt.ru || afc@nt-rt.ru