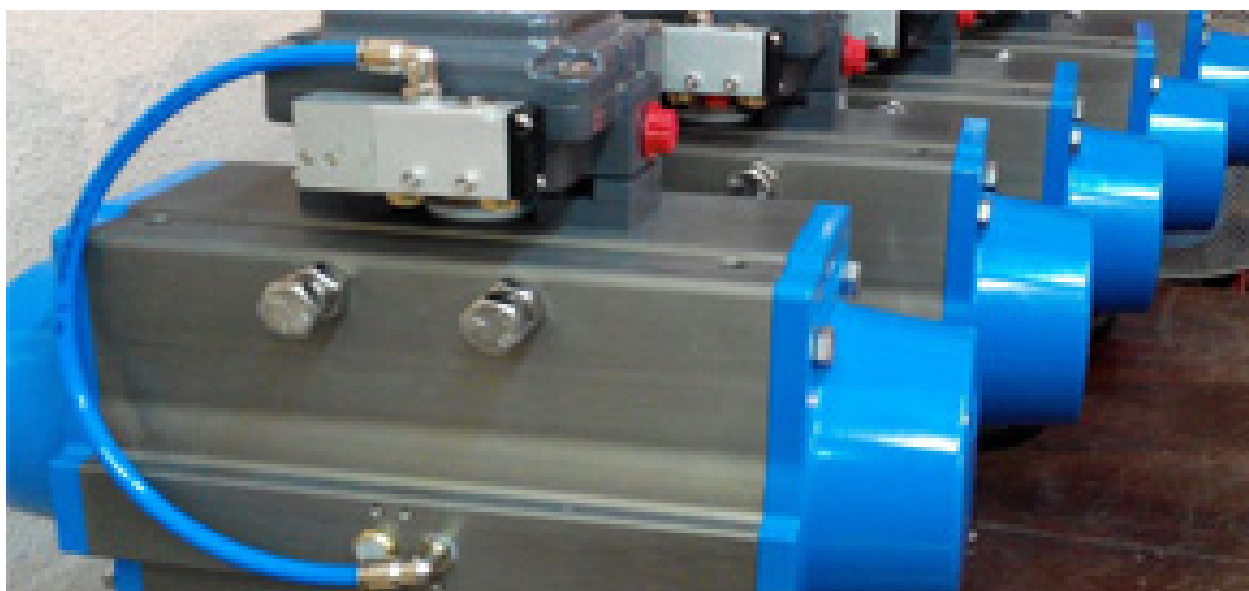


# Flame-proof solenoid valve



Архангельск (8182)63-90-72  
Астана (7172)727-132  
Астрахань (8512)99-46-04  
Барнаул (3852)73-04-60  
Белгород (4722)40-23-64  
Брянск (4832)59-03-52  
Владивосток (423)249-28-31  
Волгоград (844)278-03-48  
Вологда (8172)26-41-59  
Воронеж (473)204-51-73  
Екатеринбург (343)384-55-89

Иваново (4932)77-34-06  
Ижевск (3412)26-03-58  
Иркутск (395)279-98-46  
Казань (843)206-01-48  
Калининград (4012)72-03-81  
Калуга (4842)92-23-67  
Кемерово (3842)65-04-62  
Киров (8332)68-02-04  
Краснодар (861)203-40-90  
Красноярск (391)204-63-61  
Курск (4712)77-13-04  
Липецк (4742)52-20-81

Магнитогорск (3519)55-03-13  
Москва (495)268-04-70  
Мурманск (8152)59-64-93  
Набережные Челны (8552)20-53-41  
Нижний Новгород (831)429-08-12  
Новокузнецк (3843)20-46-81  
Новосибирск (383)227-86-73  
Омск (3812)21-46-40  
Орел (4862)44-53-42  
Оренбург (3532)37-68-04  
Пенза (8412)22-31-16

Пермь (342)205-81-47  
Ростов-на-Дону (863)308-18-15  
Рязань (4912)46-61-64  
Самара (846)206-03-16  
Санкт-Петербург (812)309-46-40  
Саратов (845)249-38-78  
Севастополь (8692)22-31-93  
Симферополь (3652)67-13-56  
Смоленск (4812)29-41-54  
Сочи (862)225-72-31  
Ставрополь (8652)20-65-13

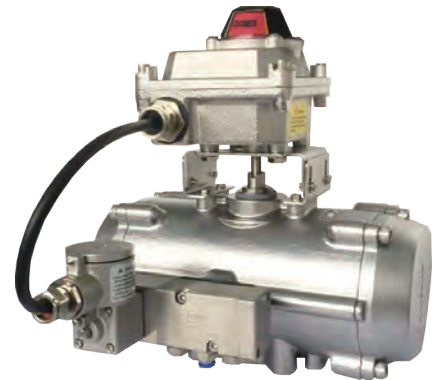
Сургут (3462)77-98-35  
Тверь (4822)63-31-35  
Томск (3822)98-41-53  
Тула (4872)74-02-29  
Тюмень (3452)66-21-18  
Ульяновск (8422)24-23-59  
Уфа (347)229-48-12  
Хабаровск (4212)92-98-04  
Челябинск (351)202-03-61  
Череповец (8202)49-02-64  
Ярославль (4852)69-52-93

Киргизия (996)312-96-26-47    Казахстан (772)734-952-31    Таджикистан (992)427-82-92-69

[www.achem.nt-rt.ru](http://www.achem.nt-rt.ru) || [afc@nt-rt.ru](mailto:afc@nt-rt.ru)

# ALV系列电磁阀

## ALV Series Solenoid Valves



- Suitable for Namur or in-line air connection  
可供管接式或板接式
- Available with 3/2, 5/2 or 5/3 with aluminum or SS316 body  
可供不锈钢或铝合阀体，可选3/2，5/2 or 5/3
- Capable with low power consumption and big flow rate  
ALV系列低功耗大流量电磁阀已成为行业领先技术
- Certified for use in all hazardous areas  
严酷检测核准可用于工业危险场所的0区、1区和2区

Approved by/ 获准证书

### **ALV010Q1C5**

Direct acting spring return normally closed solenoid valve with Ex d HC T6 aluminium enclosure coil. According to the CNOMO-30 standard, this solenoid valve can be directly attached to various flow pneumatic valves to implement pilot control.



### **ALV012Q1C4**

Direct acting spring return normally closed solenoid valve with Ex d IIC T6 aluminium enclosure coil. According to the CNOMO-30 standard, this solenoid valve can be directly attached to various flow pneumatic valves to implement pilot control.



### **ALV110F1C5**

Direct acting spring return normally closed solenoid valve with Ex d IIC T6 aluminium enclosure coil. According to the Namur standard, this solenoid valve can be directly attached to single acting pneumatic actuator located in hazardous (Ex d IIC T6) area for pneumatic control.



### **ALV112F1C4**

Direct acting spring return normally closed solenoid valve with Ex d HC T6 aluminium enclosure coil. According to the Namur standard, this solenoid valve can be directly attached to single acting pneumatic actuator located in hazardous (Ex d HC T6) area for pneumatic control.



### **ALV010Q1C5-210F2**

This solenoid valve is composed of explosion-proof direct solenoid valve and large flow spool valve. The spool valve functions as 5/2 spring return and is available for the operation of double acting pneumatic devices located in hazardous area (Class I Zone I AEx d IIC T6 Gb). 3/NC is available.



### **ALV010Q1C5-410F2**

This solenoid valve is composed of explosion-proof direct solenoid valve and large flow spool valve. The spool valve functions as 5/2 spring return and is available for the operation of double acting pneumatic devices located in hazardous area (Class I Zone I AEx d IIC T6 Gb). 3/2NC available with plug.



## ALV010Q1C5-410P1

This solenoid valve is composed of explosion-proof direct solenoid valve and large flow spool valve. The spool valve functions as 3/2 NC spring return and is available for the operation of single acting pneumatic devices located in hazardous area (Class I Zone I AEx d IIC T6 Gb).



## ALV310F2C5

Based on NAMUR standard(32x24), the ALV310F2C5 ACHEM FLAMEPROOF NAMUR solenoid valve can be directly mounted for controlling double-acting pneumatic actuators which located in hazardous area(Zone 1 &2). Working pressure from 2 bar to 8 bar and the working voltage from 12- 48VDC, 110-240VAC.



## ALV320F2C5

Based on NAMUR standard 24\*32), the ALV320F2C5 ACHEM NAMUR solenoid valve can be directly mounted on actuator with 5/2 functions and bistable for controlling double-acting pneumatic actuators. Working pressure from 2 bar to 8 bar and the working voltage from 12-48VDC, 110-240VAC



## ALV310F1C5

Based on NAMUR standard(32x24), the ALV310F1C5 ACHEM FLAMEPROOF NAMUR solenoid valve can be directly mounted for controlling spring-return pneumatic actuators which located in hazardous area(Zone 1 &2). Working pressure from 2 bar to 8 bar and the working voltage from 12- 48VDC, 110-240VAC.



## ALV510F3C5

Based on NAMUR standard (32x24), the ALV510F3C5 ACHEM NAMUR solenoid valve functions as 5/2 or 3/2NC and is available for the operation of double-acting and spring-return pneumatic actuators which located in hazardous (Ex d IIC T5 Gb) area. Working pressure from 2 bar to 8 bar and the working voltage from 12-48VDC, 110-240VAC.



### **ALV520F3C5**

Based on NAMUR standard (32x24), the ALV520F3C5 AICHEM NAMUR solenoid valve functions as 5/2 or 3/2NC and is available for the operation of double-acting and spring-return pneumatic actuators which located in hazardous (Ex d IIC T6 Gb) area. Working pressure from 2 bar to 8 bar and the working voltage from 12-48VDC, 110-240VAC.



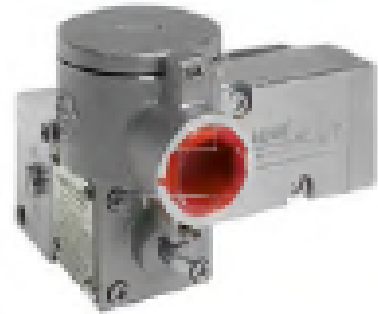
### **ALV510P1C5**

The ALV510P1C5 is in-line solenoid valve functions as 3/2 and is available for the operation of spring-return pneumatic actuators which located in hazardous (Ex d IIC T6) area. Working pressure from 2 bar to 8 bar and the working voltage from 12-48VDC, 110-240VAC.



### **ALV512F3C4**

Based on NAMUR standard (32\*24), the ALV512F3C4 solenoid valve can be adapted for 3/2 NC or 5/2 functions for controlling double-acting and spring-return pneumatic actuators. Armed with stainless steel enclosure coil and spool valve, it is excellent for being used in hazardous and corrosive area.



### **ALV010Q1C5-610P2**

This solenoid valve is composed of explosion-proof direct solenoid valve and large flow spool valve. The spool valve functions as 5/2 spring return and is available for the operation of double acting pneumatic devices located in hazardous area (Class I Zone I AEx d IIC T6 Gb). 3/2NC available with plug.



### **ALV010Q1C5-710P2**

This solenoid valve is composed of explosion-proof direct solenoid valve and large flow spool valve. The spool valve functions as 5/2 spring return and is available for the operation of double acting pneumatic devices located in hazardous area (Class I Zone I AEx d IIC T6 Gb). 3/2NC available with plug.



Архангельск (8182)63-90-72  
Астана (7172)727-132  
Астрахань (8512)99-46-04  
Барнаул (3852)73-04-60  
Белгород (4722)40-23-64  
Брянск (4832)59-03-52  
Владивосток (423)249-28-31  
Волгоград (844)278-03-48  
Вологда (8172)26-41-59  
Воронеж (473)204-51-73  
Екатеринбург (343)384-55-89  
Иваново (4932)77-34-06  
Ижевск (3412)26-03-58  
Иркутск (395)279-98-46  
Казань (843)206-01-48  
Калининград (4012)72-03-81  
Калуга (4842)92-23-67  
Кемерово (3842)65-04-62  
Киров (8332)68-02-04  
Краснодар (861)203-40-90  
Красноярск (391)204-63-61  
Курск (4712)77-13-04  
Липецк (4742)52-20-81  
Магнитогорск (3519)55-03-13  
Москва (495)268-04-70  
Мурманск (8152)59-64-93  
Набережные Челны (8552)20-53-41  
Нижний Новгород (831)429-08-12  
Новокузнецк (3843)20-46-81  
Новосибирск (383)227-86-73  
Омск (3812)21-46-40  
Орел (4862)44-53-42  
Оренбург (3532)37-68-04  
Пенза (8412)22-31-16  
Пермь (342)205-81-47  
Ростов-на-Дону (863)308-18-15  
Рязань (4912)46-61-64  
Самара (846)206-03-16  
Санкт-Петербург (812)309-46-40  
Саратов (845)249-38-78  
Севастополь (8692)22-31-93  
Симферополь (3652)67-13-56  
Смоленск (4812)29-41-54  
Сочи (862)225-72-31  
Ставрополь (8652)20-65-13  
Сургут (3462)77-98-35  
Тверь (4822)63-31-35  
Томск (3822)98-41-53  
Тула (4872)74-02-29  
Тюмень (3452)66-21-18  
Ульяновск (8422)24-23-59  
Уфа (347)229-48-12  
Хабаровск (4212)92-98-04  
Челябинск (351)202-03-61  
Череповец (8202)49-02-64  
Ярославль (4852)69-52-93

Киргизия (996)312-96-26-47    Казахстан (772)734-952-31    Таджикистан (992)427-82-92-69

[www.achem.nt-rt.ru](http://www.achem.nt-rt.ru) || [afc@nt-rt.ru](mailto:afc@nt-rt.ru)